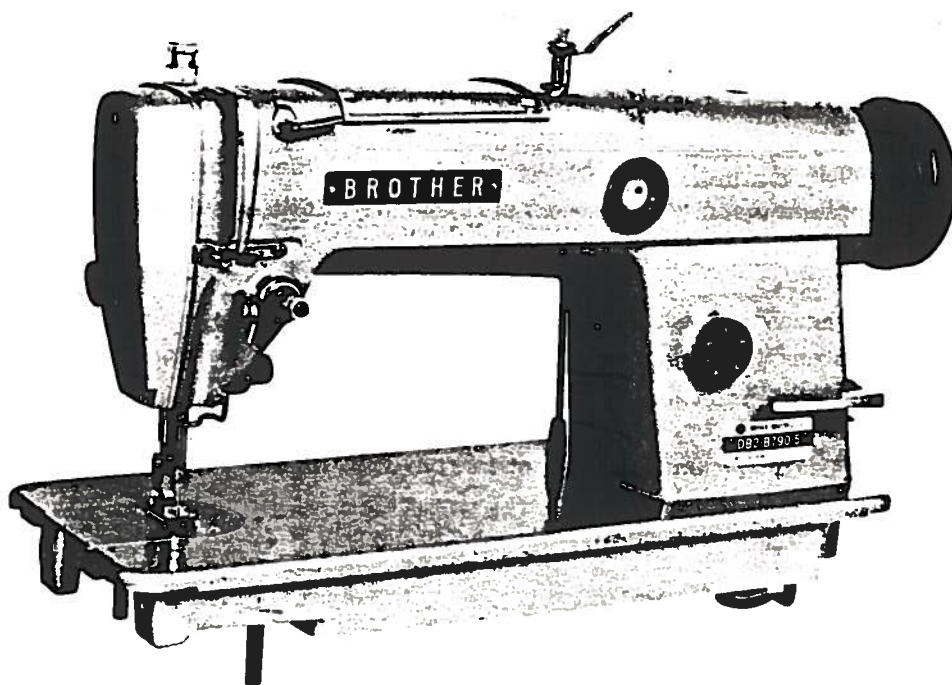


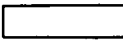
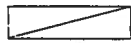
PARTS BOOK
FOR
BROTHER DB2-B790




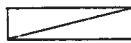
Needle Feed Lock Stitcher with Thread Trimmer

BROTHER INDUSTRIES, LTD.
NAGOYA, JAPAN



Notes for using this parts book

1. If the symbol  is found in the "Parts No." column or the "Assembly No." column, refer to the different parts list on page 16.
2. The symbol  in the "Parts No." column indicates that the part is not available for supply. If, however, there is a number in the "Assembly No." column, the part can be ordered as an assembly. Please, therefore, order by using the Assembly No..
3. This book was prepared based on information available in July, 1978.
4. Parts are subject to changes in design without prior notice.


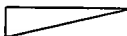
Anmerkungen zum Gebrauch dieses Stücklistebuches

1. Dieses Zeichen  in der Spalte "Parts No. (Teilnummer)" oder "Assembly No. (Gerätesatznummer)" verweist auf die Gesonderte Stückliste auf Seite 16.
2. Dieses Zeichen  in der Spalte "Teilnummer" bedeutet, daß dieser Teil nicht lieferbar ist. Wenn jedoch in der Spalte "Gerätesatznummer" eine Nummer steht, kann dieser Teil als ein Geräteteilsatz bestellt werden. Bestellen Sie daher bitte mit dieser Gerätesatznummer.
3. Dieses Buch basiert auf den Informationen vom Juli, 1978.
4. Modelländerungen sind vorbehalten.

Notes sur l'utilisation de ce manuel de pièces détachées

1. Si le symbole  se trouve dans la colonne "Parts No. (N° de pièce)" ou dans la colonne "Assembly No. (N° jeu de pces)", veuillez vous référer à la liste de pièces annexe page 16.
2. Le symbole  dans la colonne "N° de pièce" signifie que la pièce ne peut être fournie. Si, dans la colonne "N° jeu de pces", il y a un numéro de nomenclature, la pièce peut être commandée comme faisant partie d'un jeu de pièces. Donc, pour toute commande, veuillez spécifier le n° du jeu de pièces.
3. Ce manuel a été fait d'après les renseignements valables au mois de Juillet, 1978.
4. Les pièces peuvent être sujettes à des modifications sans préavis.

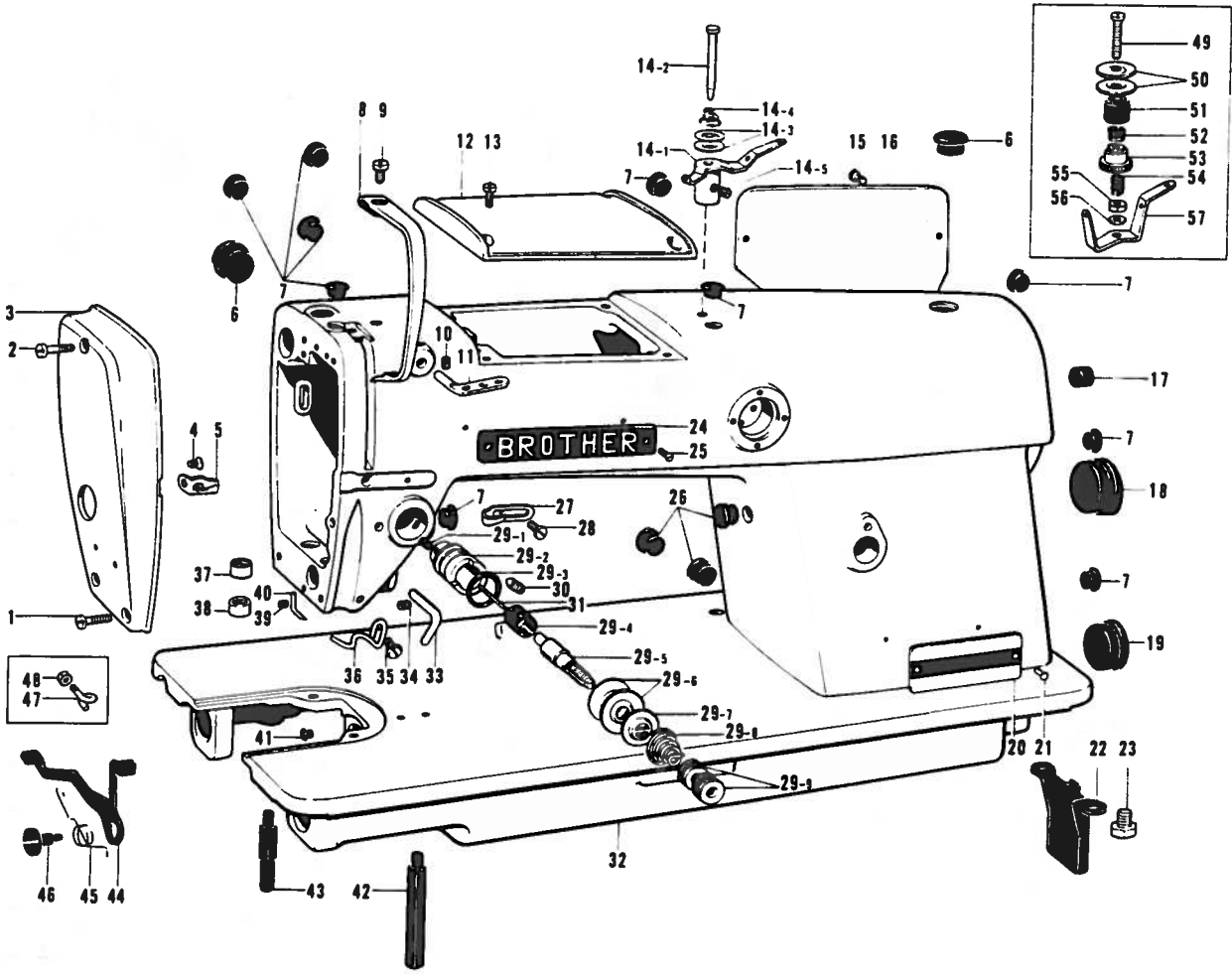
Notas para usar este Libro de Piezas

1. De haber un símbolo  junto al "Parts No. (Número de Pieza)" o en la columna del "Assembly No. (Número de Juego)", habrá que mirar la lista de piezas separada de la página 16
2. El símbolo , que se encuentra en la columna del "Número de Pieza", quiere decir que no se dispone de dicha pieza sola. Cuando, empero, hay un número en la columna del "Numero de Juego", se podrá ordenar la pieza con todo el juego. Por lo tanto, será mejor hacer el pedido recurriendo al número del juego respectivo.
3. Este libro ha sido compilado basándose en los datos de que se disponía en Julio de 1978.
4. Las piezas quedan sujetas a cambios de diseño sin aviso previo.

CONTENTS

A. Machine Body and Threading.....	1
B. Upper Shaft, Thread Take-up and Rotary Hook Mechanism.....	2
C. Needle Feed Mechanism.....	3
D. Presser Foot and Knee Lifter Mechanism.....	4
E. Feed Mechanism (Part 1).....	5
E. Feed Mechanism (Part 2).....	6
F. Lubrication (Part 1).....	7
F. Lubrication (Part 2).....	8
G. Thread Trimmer and Tension Releaser (-100, -200, -300, -400, -500, -600).....	9
H. Synchronizer (-100, -200, -300, -400, -500, -600).....	10
J. Thread Wiper Mechanism (-200, -400, -500).....	11
K. Quick Back Mechanism (-300, -400, -500, -600).....	12
L. Presser Lifter and Treadle (-500, -600).....	13
M. Control Box (-500, -600).....	14
Z. Accessories.....	15
DIFFERENT PARTS LIST.....	16
a. Exclusive Parts.....	31
INDEX.....	32

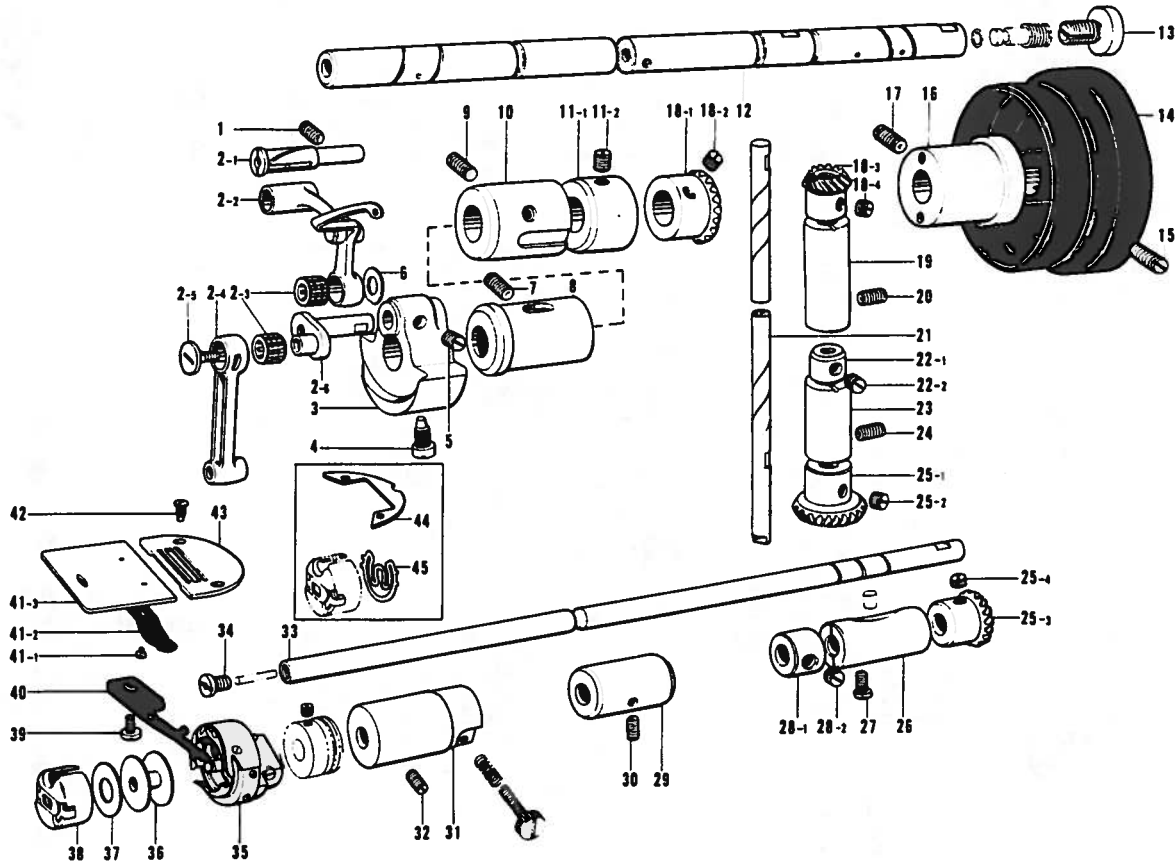
A. Machine Body and Threading



Ref. No.	Name of Parts	Qty	Parts No.	Assembly No.	Ref. No.	Name of Parts	Qty	Parts No.	Assembly No.
A-1	Screw	2	009671-4-13		A-29-6	Tension Disc	2	145446-0-01	A-29 Upper Tension Regulator Bracket Assembly
A-2	Screw	1	009671-8-13		A-29-7	Tension Disc Washer	1	100134-0-01	
A-3	Face Plate	1	118767-0-01		A-29-8	Tension Spring	1		
A-4	Screw	1			A-29-9	Nut	2	100136-0-01	
A-5	Face Plate Thread Guide	1			A-30	Screw	1	103950-0-02	
A-6	Oil Cap	2	104449-0-01		A-31	Tension Release Pin	1		
A-7	Vinyl Cap	10	104450-0-01		A-32	Arm Bed	1		
A-8	Thread Take-up Cover	1	140885-0-01		A-33	Thread Guide	1	116112-0-01	
A-9	Screw	1	009680-7-13		A-34	Screw	1	011711-4-12	
A-10	Screw	1	013680-6-12		A-35	Screw	1		
A-11	Thread Retainer	1	114931-0-01		A-36	Arm Thread Guide, D	1		
A-12	Top Cover	1	118674-0-01		A-37	Oil Stopper Ring	1	118785-0-00	
A-13	Screw	4	009681-0-14		A-38	Oil Stopper Ring, D	1	147891-0-00	
A-14-1	Pretension	1		A-14 Pretension Assembly	A-39	Screw	1	117666-0-01	
A-14-2	Pretension Stud	1			A-40	Needle Bar Position Pointer	1		
A-14-3	Thread Guide Disc	2	144504-0-01		A-41	Oil Cap	1	142274-0-01	
A-14-4	Spring	1	144505-0-00		A-42	Bed Leg A	1	104829-0-01	
A-14-5	Screw	1	102716-0-03		A-43	Bed Leg B	1	104830-0-01	
A-15	Screw	4	009670-8-12		A-44	Tension Release Crank	1		
A-16	Side Cover	1			A-45	Spring	1		
A-17	Oil Cap	1	104832-0-01		A-46	Screw	1		
A-18	Oil Cap	1	118675-0-01		A-47	Thread Guide	1		
A-19	Oil Cap	1	108520-0-01		A-48	Nut	1		
A-20	Model Plate	1			A-49	Pretension Stud	1		
A-21	Model Plate Pin	2			A-50	Thread Guide Disc	2		
A-22	Pump Cover	1	118672-0-01		A-51	Washer	1		
A-23	Bolt	2	140704-0-01		A-52	Spring	1		
A-24	Name Plate BROTHER	1			A-53	Nut	1		
A-25	Screw	2			A-54	Spring	1		
A-26	Oil Cap	3	104821-0-01		A-55	Nut	1		
A-27	Arm Thread Guide	1	113316-0-01		A-56	Washer	1		
A-28	Screw	1	009670-6-14		A-57	Thread Guide Plate	1		
A-29-1	Screw	1	100402-0-04	A-29 Upper Tension Regulator Bracket Assembly					
A-29-2	Upper Tension Regulator Bracket	1	144741-0-01						
A-29-3	Packing	1	114294-0-01						
A-29-4	Thread Take-up Spring	1							
A-29-5	Tension Stud	1	116922-0-01						

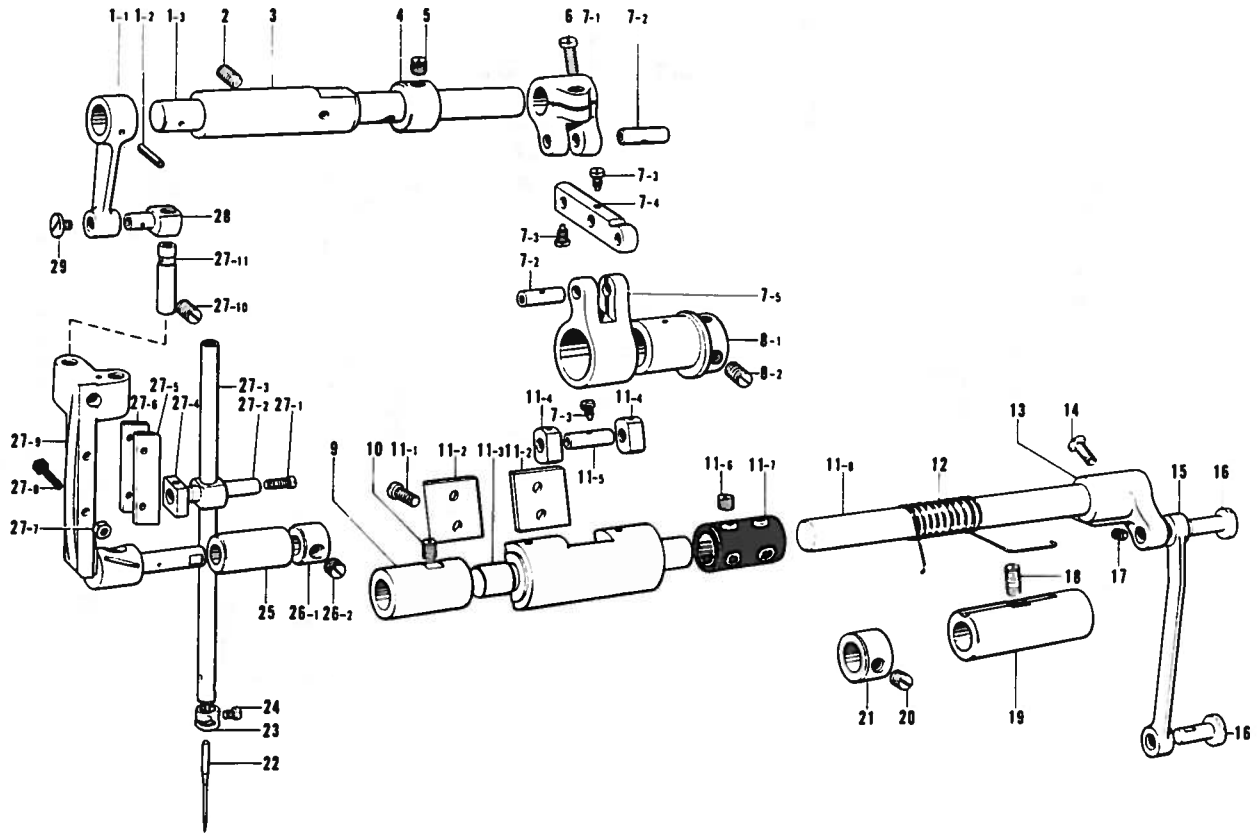
From the library of: Diamond Needle Corp

B. Upper Shaft, Thread Take-up and Rotary Hook Mechanism



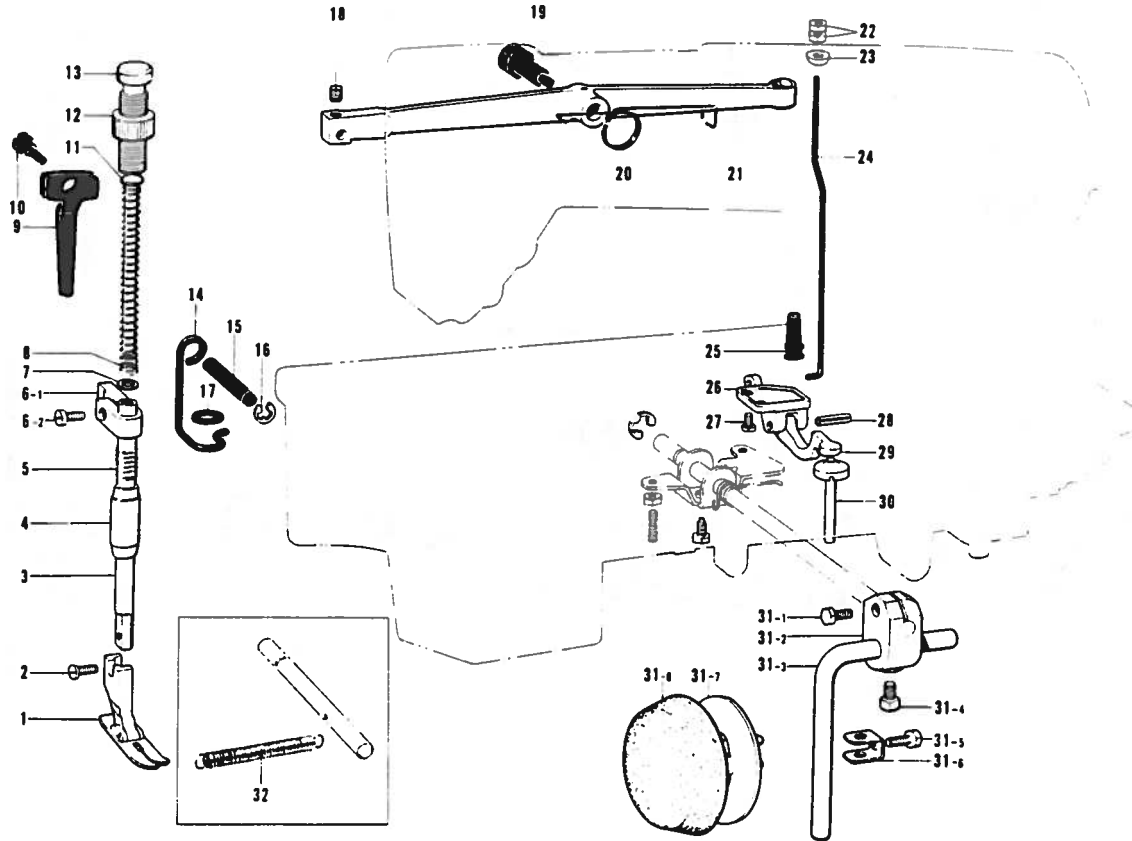
Ref. No.	Name of Parts	Q'ty	Parts No.	Assembly No.	Ref. No.	Name of Parts	Q'ty	Parts No.	Assembly No.
B-1	Screw	1	013761-4-10		B-23	Vertical Shaft Lower Bushing	1	142709-0-00	
B-2-1	Stud	1	111468-0-01		B-24	Screw	1	013761-4-10	
B-2-2	Thread Take-up Lever	1		B-2 Needle Bar Connecting Rod Assembly	B-25-1	Vertical Shaft Lower Gear	1		B-25 Lower Gear Assembly 180023-0-01
B-2-3	Needle Roller Bearing	2	116735-0-00		B-25-2	Screw	3	013770-7-10	
B-2-4	Needle Bar Crank Rod	1	118829-0-01		B-25-3	Lower Shaft Gear	1		
B-2-5	Screw	1	145465-0-01		B-25-4	Screw	2	013770-7-10	
B-2-6	Needle Bar Crank	1			B-26	Lower Shaft Bushing Right	1	104520-1-00	
B-3	Thread Take-up Crank	1		B-27	Screw	1	121007-0-01		
B-4	Screw	1	104464-0-01		B-28-1	Lower Shaft Collar	1		B-28 Collar with Screw 181995-0-01
B-5	Screw	2	013770-7-10	B-28-2	Screw	2	101706-0-03		
B-6	Washer	1	110367-0-01		B-29	Lower Shaft Bushing Middle	1	118762-0-00	
B-7	Screw	1	013761-4-10		B-30	Screw	1	011681-2-12	
B-8	Upper Shaft Bushing Left	1	118678-0-01		B-31	Lower Shaft Bushing Left	1	118761-1-00	
B-9	Screw	1	013761-4-10		B-32	Screw	1	013680-8-12	
B-10	Upper Shaft Bushing Middle	1	140726-0-00		B-33	Lower Shaft	1		
B-11-1	Collar	1		B-11 Collar with Screw 181994-0-01	B-34	Screw	1	109173-0-01	
B-11-2	Screw	2	013760-8-10		B-35	Rotary Hook Assembly	1		
B-12	Upper Shaft	1	118677-0-01		B-36	Bobbin	1	146290-0-01	
B-13	Screw	1	104478-0-01		B-37	Bobbin Case Sheet	1		
B-14	Pulley	1			B-38	Bobbin Case	1		
B-15	Screw	2	013761-4-10		B-39	Screw	1		
B-16	Upper Shaft Bushing Right	1	146331-0-01		B-40	Bobbin Case Holder Position Bracket	1	140757-0-01	
B-17	Screw	1	013760-6-10						
B-18-1	Upper Shaft Gear	1		B-18 Upper Gear Assembly 180022-0-01	B-41-1	Screw	2	122771-0-01	B-41 Slide Plate Assembly 180018-0-01
B-18-2	Screw	2	013770-7-10		B-41-2	Slide Plate Spring	1	114561-0-01	
B-18-3	Vertical Shaft Gear	1			B-41-3	Slide Plate	1		
B-18-4	Screw	2	013770-7-10		B-42	Screw	2	100032-0-03	
B-19	Vertical Shaft Upper Bushing	1	142708-0-00		B-43	Needle Plate	1		
B-20	Screw	1	013760-6-10		B-44	Needle Plate Washer	1		
B-21	Vertical Shaft	1	144868-0-01		B-45	Bobbin Presser Spring	1		
B-22-1	Lower Shaft Collar	1		B-22 Collar with Screw 118759-0-01					
B-22-2	Screw	2	101706-0-03						

C. Needle Feed Mechanism



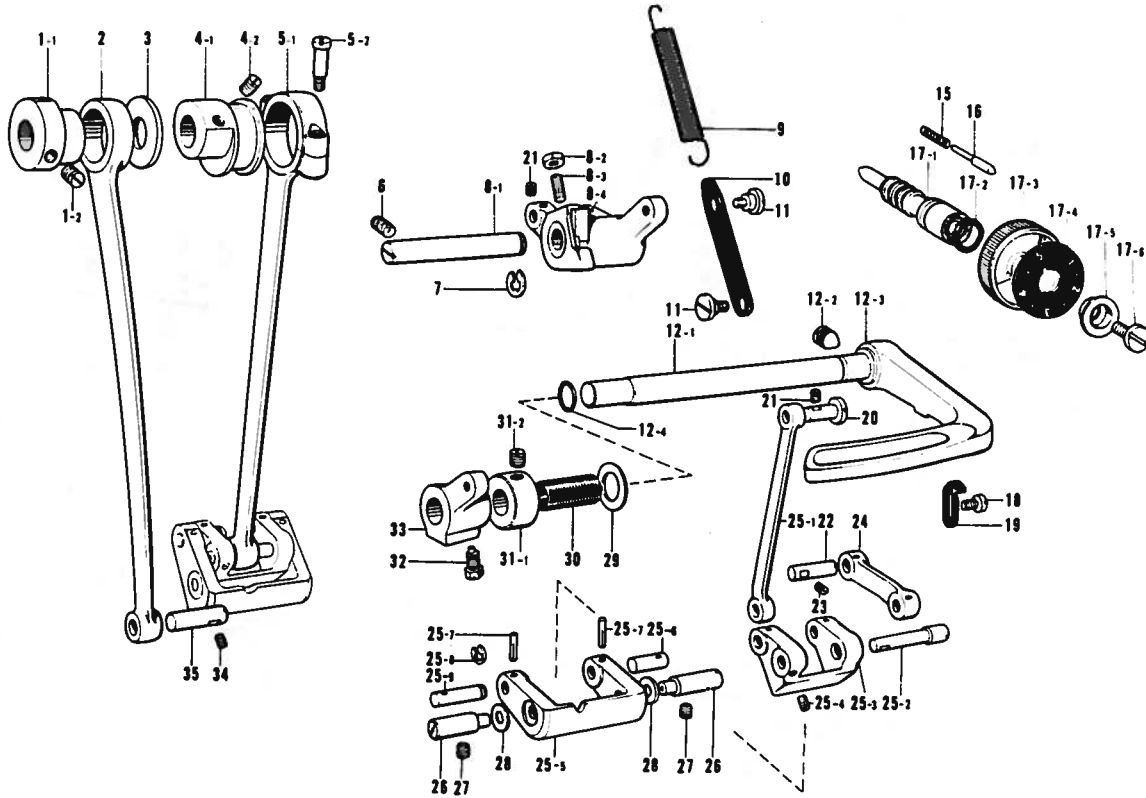
Ref. No.	Name of Parts	Q'ty	Parts No.	Assembly No.	Ref. No.	Name of Parts	Q'ty	Parts No.	Assembly No.
C-1-1	Needle Bar Driving Arm	1		C-1	C-14	Screw	1	009711-2-12	
C-1-2	Pin	1		C-1	C-15	Needle Feed Regulator Connecting Link	1	118712-0-01	
C-1-3	Needle Feed Shaft	1		C-1	C-16	Pin	2	118713-0-01	
C-2	Screw	1	100058-0-03	C-2	C-17	Screw	1	013679-4-12	
C-3	Needle Feed Shaft Bushing	1	118696-0-00	C-3	C-18	Screw	1	013761-4-10	
C-4	Set Collar	1	146581-0-01	C-4	C-19	Bushing Right	1	118708-0-01	
C-5	Screw	2	100260-0-01	C-5	C-20	Screw	2	100260-0-01	
C-6	Screw	1	009711-2-12	C-6	C-21	Set Collar	1	146581-0-01	
C-7-1	Needle Feed Arm	1		C-7	C-22	Needle DB x 1	1		
C-7-2	Shaft	2	110562-0-01	C-7	C-23	Needle Bar Thread Guide	1		
C-7-3	Screw	3	110563-0-01	C-7	C-24	Screw	1	140553-0-01	
C-7-4	Needle Feed Motion Transmitter	1	118700-0-01	C-7	C-25	Needle Bar Bushing	1	118691-0-01	
C-7-5	Needle Feed Connecting Rod	1	118699-0-01	C-7	C-26-1	Collar	1	104521-0-02	C-26 Collar with Screw 145951-0-01
C-8-1	Needle Feed Eccentric Wheel	1		C-8	C-26-2	Screw	2	014770-6-22	
C-8-2	Screw	2	101706-0-01	C-8	C-27-1	Screw	1	118687-0-01	
C-9	Bushing Left	1	118707-0-01	C-9	C-27-2	Needle Bar Clamp	1	118686-0-01	
C-10	Screw	1	013760-6-10	C-10	C-27-3	Needle Bar	1		
C-11-1	Screw	4	009681-0-12	C-11	C-27-4	Needle Bar Guide Slide Block	1	118698-0-01	
C-11-2	Guide Plate	2	118705-0-01	C-11	C-27-5	Needle Bar Guide Plate	1	118688-0-01	
C-11-3	Needle Feed Regulator Bracket	1		C-11	C-27-6	Needle Bar Guide Plate B	1	142425-0-01	
C-11-4	Feed Regulator Slide Block	2	110488-0-01	C-11	C-27-7	Nut	2	021670-2-03	
C-11-5	Shaft	1	110562-0-01	C-11	C-27-8	Bolt	2	017671-8-12	
C-11-6	Screw	4	101706-0-01	C-11	C-27-9	Needle Bar Bracket	1		
C-11-7	Connector	1	118709-0-01	C-11	C-27-10	Screw	1	013761-4-10	
C-11-8	Needle Feed Regulator Shaft	1	118706-0-01	C-11	C-27-11	Needle Bar Guide Slide Block	1	118690-0-01	
C-12	Spring	1		C-12	C-28	Clamp	1	118692-0-01	
C-13	Needle Feed Regulator Shaft Arm	1	148285-0-01	C-13	C-29	Screw	1	110711-0-01	

D. Presser Foot and Knee Lifter Mechanism



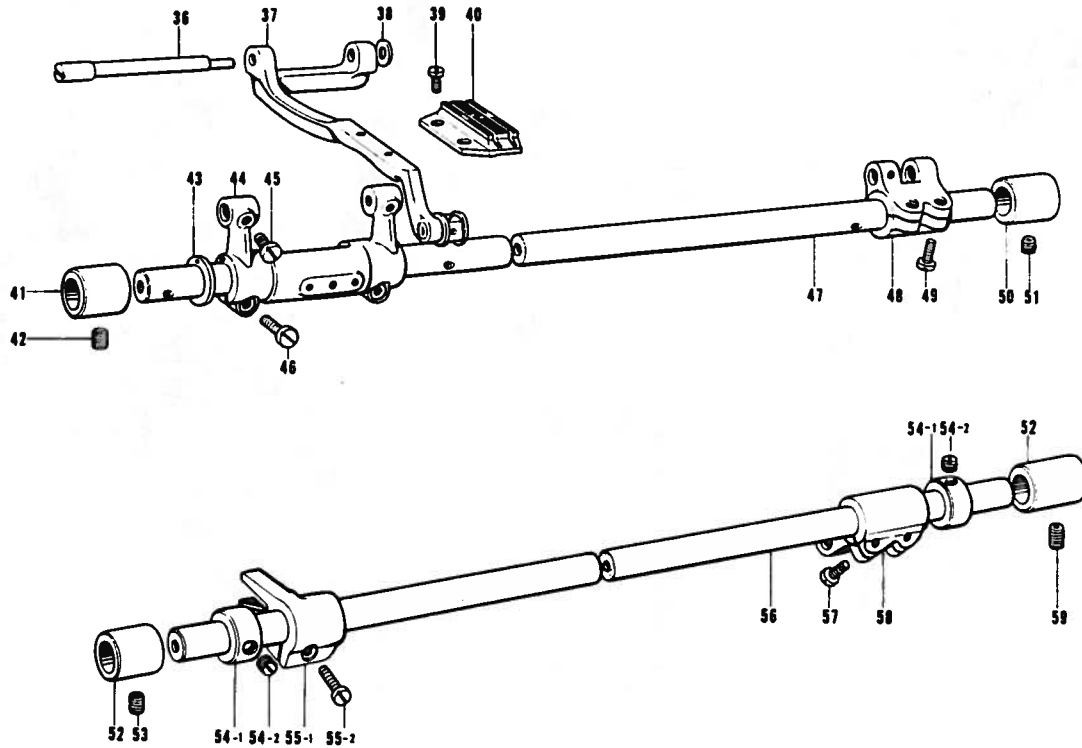
Ref. No.	Name of Parts	Q'ty	Parts No.	Assembly No.	Ref. No.	Name of Parts	Q'ty	Parts No.	Assembly No.
D-1	Presser Foot Assembly	1			D-19	Screw	1	102921-0-02	
D-2	Screw	1	001670-8-14		D-20	Spring	1	116752-0-01	
D-3	Presser Bar	1	111466-0-01		D-21	Knee Lifter	1	148449-0-01	
D-4	Presser Bar Bushing	1	111467-0-01		D-22	Nut	2	110161-0-02	
D-5	Spring	1	118718-0-01		D-23	Washer	1	116748-0-01	
D-6-1	Presser Bar Bracket	1		D-6 Presser Bar Bracket 180952-0-01	D-24	Knee Lifter Connecting Rod	1	148450-0-01	
D-6-2	Screw	1	009671-0-12		D-25	Cover	1	117211-0-01	
D-7	Presser Spring Washer	1	140407-0-01		D-26	Knee Lifter Lever Supporter	1	116751-0-01	
D-8	Spring	1	141728-0-01		D-27	Screw	2	009680-7-12	
D-9	Presser Foot Lifter	1	116743-0-01		D-28	Pin	1	047601-8-42	
D-10	Screw	1	116744-0-01		D-29	Knee Lifter Lever	1	118723-0-01	
D-11	Presser Spring Bar	1	141208-0-01		D-30	Knee Lifter Complying Bar	1	116798-0-01	
D-12	Nut	1	147846-0-01		D-31-1	Bolt	1	017762-0-13	D-31 Knee Lifter Assembly
D-13	Screw	1	141207-0-01		D-31-2	Knee Lifter Joint	1	146039-0-01	
D-14	Presser Bar Lifting Connector	1	118720-0-01		D-31-3	Knee Lifter Bar	1	104619-0-02	
D-15	Presser Bar Lifter Shaft	1	116746-0-01		D-31-4	Bolt	1	100463-0-01	
D-16	Stop Ring	1	048040-3-42		D-31-5	Bolt	1	110087-0-01	
D-17	Washer	1	118719-0-01		D-31-6	Knee Lifter Plate Stopper	1	114967-0-01	
D-18	Screw	1	013760-8-12		D-31-7	Knee Lifter Plate	1	114966-0-01	
					D-31-8	Knee Lifter Cover	1	140503-0-01	
					D-32	Spring	2		

E. Feed Mechanism (Part 1)



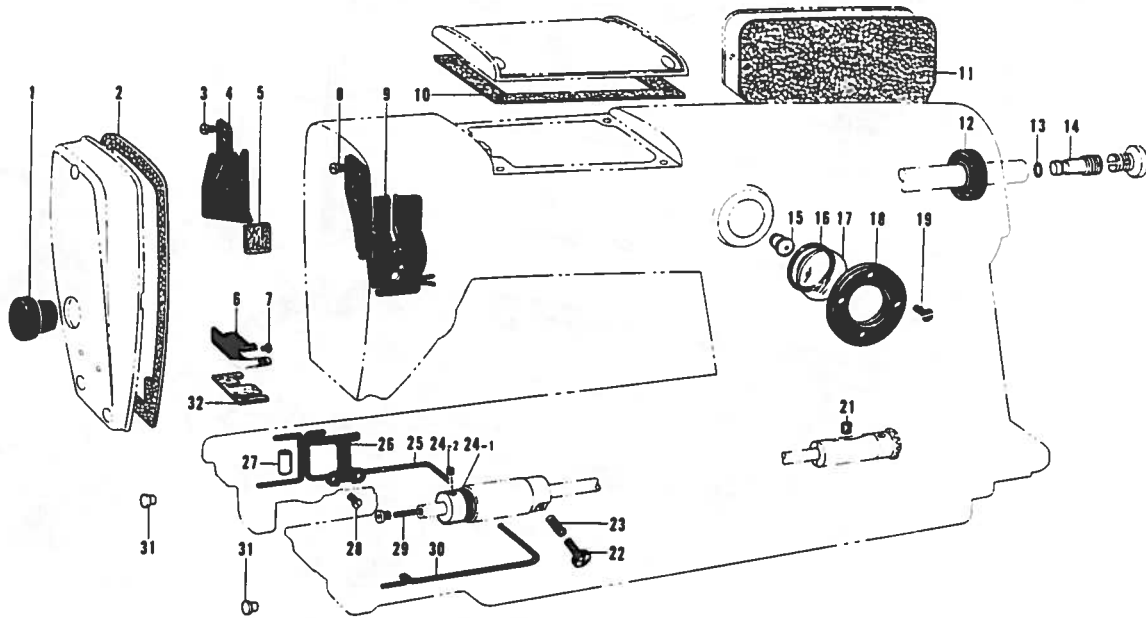
Ref. No.	Name of Parts	Q'ty	Parts No.	Assembly No.	Ref. No.	Name of Parts	Q'ty	Parts No.	Assembly No.
E-1-1	Vertical Feed Eccentric Wheel	1		E-1	E-18	Screw	1	009680-7-14	
E-1-2	Screw	2	013760-8-10	Eccentric Wheel	E-19	Reverse Lever Stopper	1	118865-0-01	
E-2	Vertical Feed Connecting Rod	1	118758-0-01		E-20	Pin	1	118713-0-01	
E-3	Stopper	1	101482-0-01		E-21	Screw	2	013689-4-12	
E-4-1	Eccentric Wheel	1		E-4	E-22	Feed Rock Shaft Arm Pin	1	118740-0-01	
E-4-2	Screw	2	013760-8-10	Eccentric Wheel	E-23	Screw	1	013689-4-12	
E-5-1	Crank Rod	1		E-5	E-24	Lever Feed Connecting Rod	1	118736-0-01	
E-5-2	Screw	2	144712-0-01	Crank Rod	E-25-1	Lever Regulator Connecting Rod	1	118730-0-01	
E-6	Screw	1	013760-8-10	118725-0-01	E-25-2	Stud	1	118737-0-01	
E-7	Stop Ring	1	048070-3-42		E-25-3	Lever Feed Link	1	118729-0-01	
E-8-1	Feed Controller Shaft	1	118744-0-01	E-8	E-25-4	Screw	1	013689-4-12	E-25
E-8-2	Nut	1	105234-0-01	Feed Controller	E-25-5	Feed Regulator	1		Feed Regulator
E-8-3	Screw	1	011681-2-12	Assembly	E-25-6	Stud Small	1	118732-0-01	Assembly
E-8-4	Feed Controller	1		118741-0-01	E-25-7	Pin	2	118733-0-01	118727-0-01
E-9	Spring	1			E-25-8	Stop Ring	1	048040-3-42	
E-10	Connecting Plate	1	118746-0-01		E-25-9	Stud Large	1	118731-0-01	
E-11	Screw	2	112072-0-01		E-26	Feed Regulator Shaft	2	118734-0-01	
E-12-1	Feed Controller Lever Shaft	1	118751-0-01	E-12	E-27	Screw	2	013760-8-10	
E-12-2	Set Screw	1	015771-0-12	Reverse Lever	E-28	Washer	2	118735-0-01	
E-12-3	Reverse Lever	1			E-29	Washer	1	025100-1-30	
E-12-4	O Ring	1	104564-0-01		E-30	Collar	1	118748-0-01	
E-15	Spring	1	100328-0-01		E-31-1	Collar	1		E-31
E-16	Pin	1	100327-0-01		E-31-2	Screw	2	013760-8-10	Collar with
E-17-1	Length Control Screw	1	109151-0-01	E-17	E-32	Bolt	1	108749-0-01	Screw
E-17-2	Packing	1	108549-0-01	Length Control	E-33	Feed Regulator Bracket	1	118747-0-01	118824-0-01
E-17-3	Length Control	1	142482-0-01	Assembly	E-34	Screw	1	013689-4-12	
E-17-4	Feed Regulator Plate	1	146183-0-01	181482-0-01	E-35	Feed Rock Shaft Arm Pin	1	109153-0-01	
E-17-5	Washer	1	142746-0-02						
E-17-6	Screw	1	142747-0-02						

E. Feed Mechanism (Part 2)



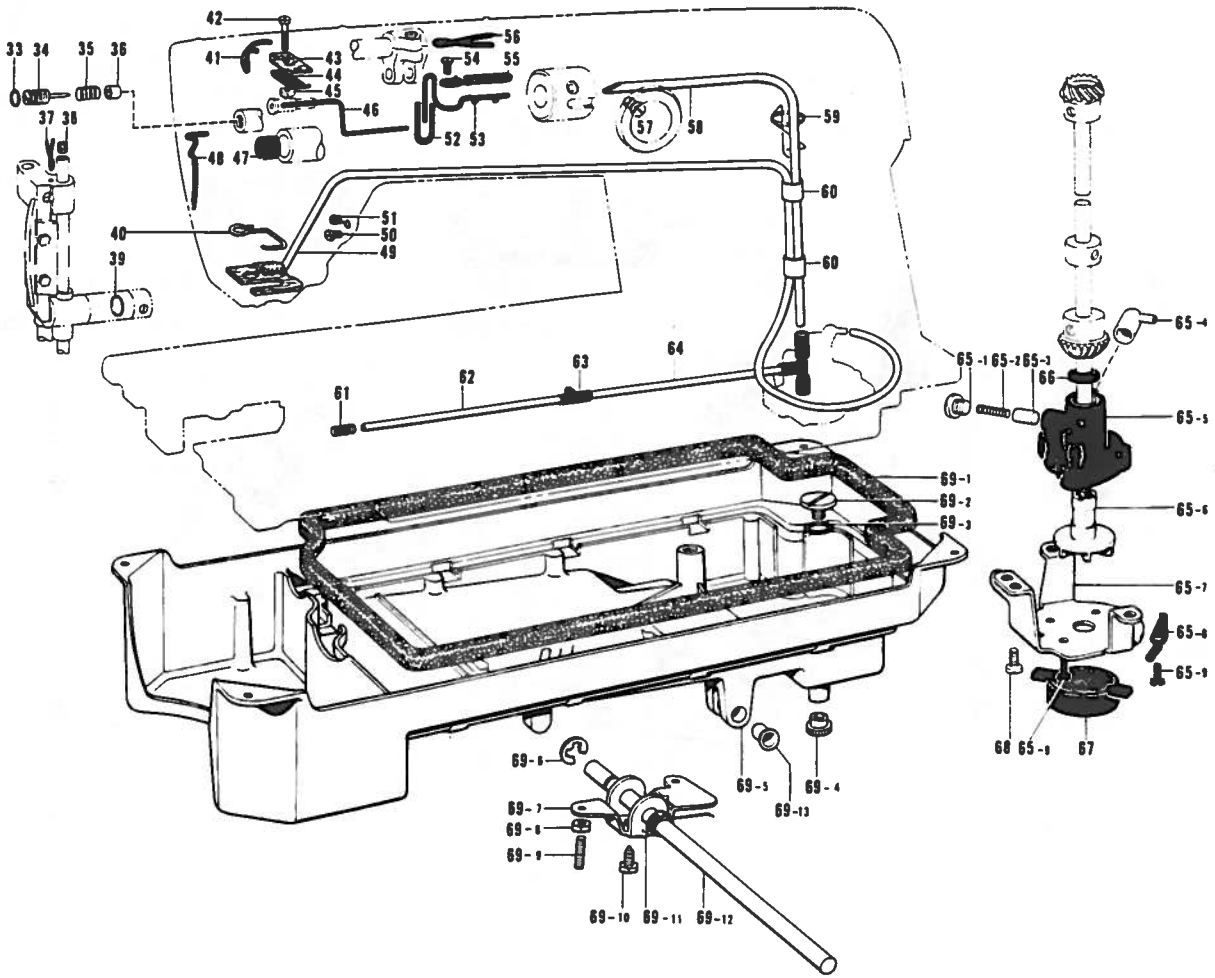
Ref. No.	Name of Parts	Q'ty	Parts No	Assembly No.	Ref. No.	Name of Parts	Q'ty	Parts No.	Assembly No.
E-36	Feed Bar Shaft	1	116917-0-01		E-51	Screw	1	101706-0-01	
E-37	Feed Bar	1	181523-0-01		E-52	Feed Shaft Bushing Small	2	116766-0-01	
E-38	Ring	1	115663-0-01		E-53	Screw	1	101706-0-01	
E-39	Screw	2	100080-0-03		E-54-1	Collar	2		E-54
E-40	Feed Dog	1			E-54-2	Screw	4	101706-0-01	Collar with Screw 180321-0-01
E-41	Feed Shaft Bushing Small	1	116766-0-01		E-55-1	Feed Lifting Arm	1		E-55
E-42	Screw	1	101706-0-01		E-55-2	Screw	1	009681-6-12	Feed Lifting Arm Assembly 180322-0-01
E-43	Thrust Ring	1	116920-0-01		E-56	Vertical Feed Shaft	1	142572-0-01	
E-44	Feed Bar Arm	1	145510-0-00		E-57	Screw	2	009681-2-12	
E-45	Screw	2	104908-0-01		E-58	Feed Rock Shaft Arm	1		
E-46	Screw	2	009681-2-12		E-59	Screw	1	013770-7-10	
E-47	Feed Rock Shaft	1	142573-0-01						
E-48	Feed Rock Shaft Arm	1	148286-0-01						
E-49	Screw	2	009711-2-12						
E-50	Feed Shaft Bushing Left	1	116919-0-01						

F. Lubrication (Part 1)



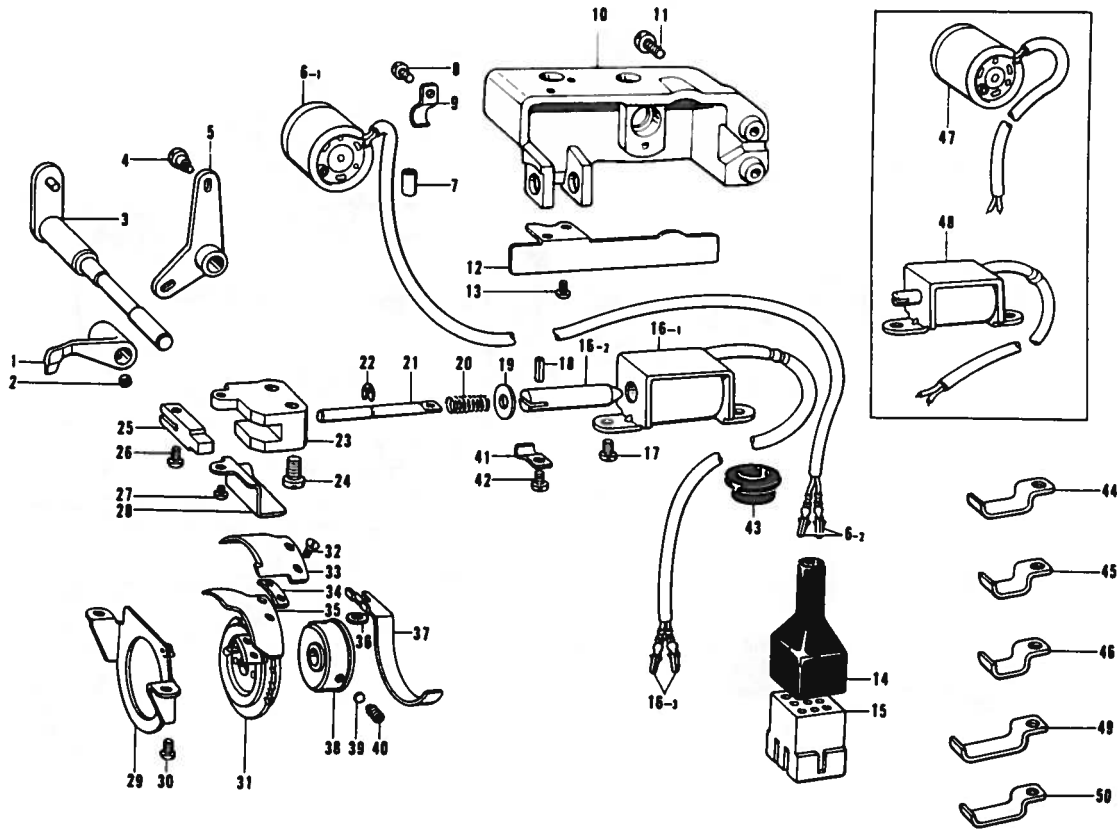
Ref. No.	Name of Parts	Q'ty	Parts No.	Assembly No.	Ref. No.	Name of Parts	Q'ty	Parts No.	Assembly No.
F-1	Oil Cap	1	112782-0-01		F-18	Oil Gauge Flange	1	104546-0-01	
F-2	Packing	1	118777-0-01		F-19	Screw	4	102538-0-02	
F-3	Screw	2	009670-4-12		F-21	Felt	1	107155-0-01	
F-4	Oil Stopper Plate	1	118781-0-01		F-22	Screw	1	145534-0-01	
F-5	Felt	1	118782-0-01		F-23	Spring	1	116794-0-01	
F-6	Oil Stopper Plate	1	118786-0-01		F-24-1	Oil Rejector	1		F-24
F-7	Screw	2	009660-3-02		F-24-2	Screw	2	013689-4-12	Oil Rejector
F-8	Screw	2	009670-5-12		F-25	Wick	1	108801-0-01	
F-9	Oil Stopper Plate	1	181640-0-01		F-26	Wick Supporter	1	109171-0-01	
F-10	Packing	1	118779-0-01		F-27	Vinyl Tube	2	104566-0-01	
F-11	Packing	1	118778-0-01		F-28	Screw	1	009679-3-12	
F-12	Oil Seal	1	101487-0-00		F-29	Oil Felt	1		
F-13	O Ring	1	081002-6-70		F-30	Wick	1	108802-0-01	
F-14	Oil Screw Right for Upper Shaft	1	104555-0-01		F-31	Oil Cap	4	111865-0-01	
F-15	Oil Hole Bolt for Oil Gauge	1	143196-0-01		F-32	Felt	1	150306-0-01	
F-16	O Ring	1	081014-6-70						
F-17	Oil Gauge Window	1	104547-0-01						

F. Lubrication (Part 2)



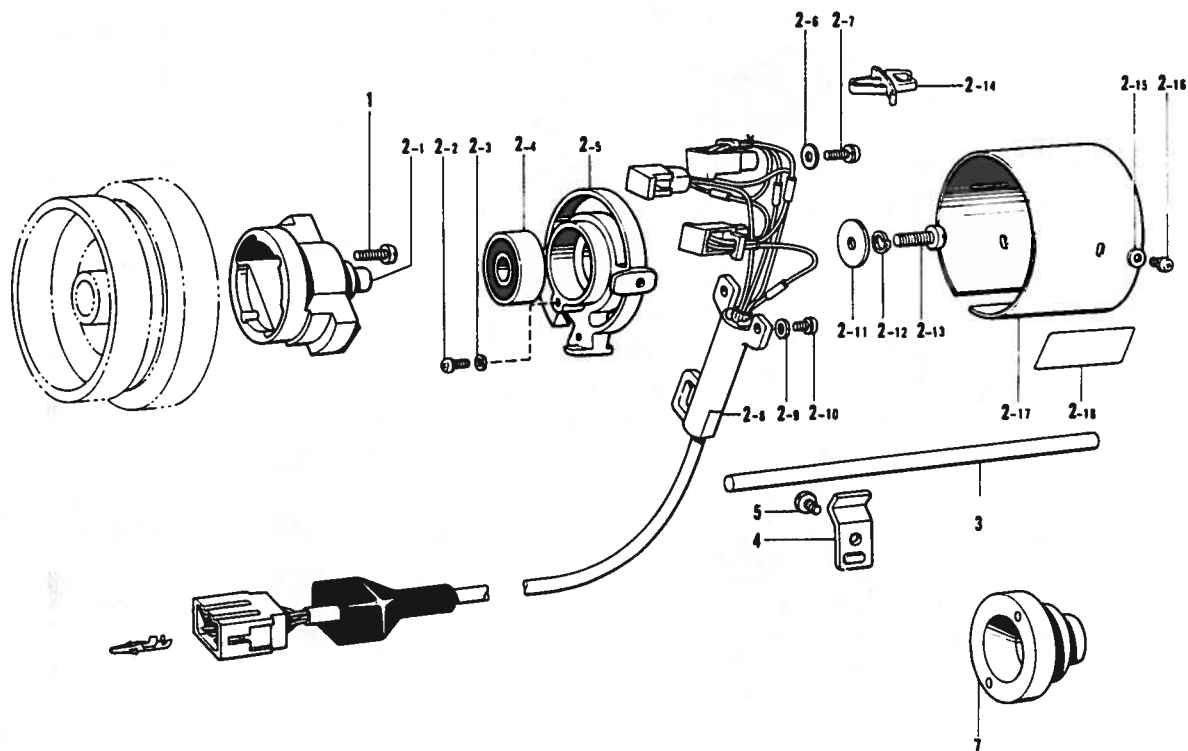
Ref. No.	Name of Parts	Q'ty	Parts No.	Assembly No.	Ref. No.	Name of Parts	Q'ty	Parts No.	Assembly No.
F-33	Packing	1	118770-0-01		F-61	Spring	1	100328-0-01	
F-34	Oil Adjusting Screw for Upper Shaft	1	140412-0-01		F-62	Vinyl Tube	1	146323-0-00	
F-35	Spring	1	116799-0-01		F-63	Tube Joint	1	146324-0-01	
F-36	Oil Bushing	1	140357-0-01		F-64	Oil Tube	1	146319-0-01	
F-37	Wick	1	140438-0-01		F-65-1	Screw	1	112467-0-02	
F-38	Needle Bar Cork	1	111863-0-01		F-65-2	Spring	1	144876-0-01	
F-39	O Ring	1	111194-0-01		F-65-3	Plunger	1	144875-0-01	
F-40	Felt Supporter	1	150305-0-01		F-65-4	Joint	1	144878-0-01	
F-41	Wick	1	109405-0-01		F-65-5	Pump Body	1	148848-0-01	F-65 Pump Assembly 181476-1-01
F-42	Screw	1	009671-4-14		F-65-6	Pump Propeller	1	148849-0-01	
F-43	Felt	1	118784-0-01		F-65-7	Pump	1	144869-0-01	
F-44	Felt Supporter	1	118783-0-01		F-65-8	Spring	2	144874-0-01	
F-45	Nut	1	021670-2-03		F-65-9	Screw	4	009670-8-12	
F-46	Wick	1	118768-0-01		F-66	Oil Stopper	1	146196-0-01	
F-47	Cap	1	140361-0-01		F-67	Pump Filter	1	144872-0-01	
F-48	Wick	1	118768-0-01		F-68	Screw	3	009680-7-13	
F-49	Oil Tube	1	146398-0-01		F-69-1	Packing	1	146040-0-01	
F-50	Screw	1	009670-5-12		F-69-2	Screw	1	140518-0-01	
F-51	Tube Stopper	1	112744-0-01		F-69-3	O Ring	1	081007-0-70	
F-52	Wick	1	140320-0-00		F-69-4	Oil Cap	1	140480-0-01	
F-53	Wick	1	118768-0-01		F-69-5	Oil Pan	1		
F-54	Screw	1	009670-5-12		F-69-6	Stop Ring	1	146293-0-01	F-69 Oil Pan Assembly
F-55	Wick Holder	1	118788-0-01		F-69-7	Knee Lifter	1	146037-0-01	
F-56	Wick	1	108802-0-01		F-69-8	Nut	2	100022-0-04	
F-57	Screw	1	013680-8-12		F-69-9	Screw	2	104885-0-01	
F-58	Upper Oil Tube	1	146329-0-00		F-69-10	Bolt	1	146367-0-01	
F-59	Tube Guard	1	146326-0-01		F-69-11	Spring	1		
F-60	Vinyl Tube	2	118996-0-00		F-69-12	Knee Lifter Shaft	1		
					F-69-13	Bushing	2	149578-0-00	

G. Thread Trimmer and Tension Releaser (-100, -200, -300, -400, -500, -600)



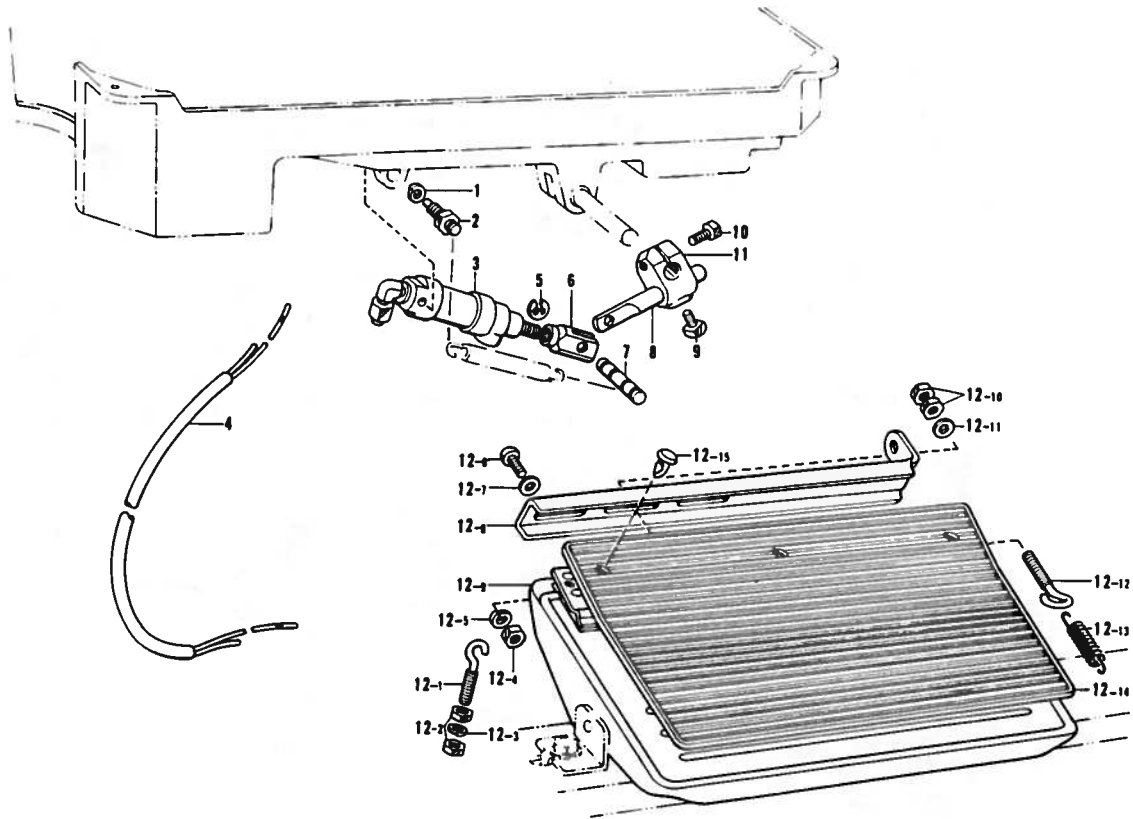
Ref. No.	Name of Parts	Q'ty	Parts No.	Assembly No.	Ref. No.	Name of Parts	Q'ty	Parts No.	Assembly No.
G- 1	Thread Release Lever	1	147103-0-01		G-23	Stopper Guide	1	145618-0-01	
G- 2	Screw	1	102716-0-03		G-24	Screw	2	145619-0-01	
G- 3	Thread Release Link	1	147104-0-01		G-25	Stopper	1	145617-0-01	
G- 4	Screw	1	120263-0-01		G-26	Screw	1	009660-7-12	
G- 5	Thread Release Link	1	147106-0-01		G-27	Screw	1	009679-3-12	
G- 6-1	Rotary Solenoid	1		G-6 Tension Release Solenoid Assembly	G-28	Oil Stopper Plate	1	145623-0-01	
G- 6-2	Terminal Pin	2	143549-0-00		G-29	Holder Plate	1	145933-0-01	
G- 7	Vinyl Tube	1	121823-0-01		G-30	Screw	2	009680-6-12	
G- 8	Screw	2	009670-6-12		G-31	Movable Knife Holder Assembly	1	145601-0-01	
G- 9	Supporter	2			G-32	Screw	2	141542-0-01	
G-10	Solenoid Holder	1	147110-1-01		G-33	Movable Knife	1		
G-11	Screw	2	009681-0-13		G-34	Spacer	1		
G-12	Solenoid Cover	1	148451-0-01		G-35	Lower Thread Finger	1		
G-13	Screw	2			G-36	Washer	1	025680-1-33	
G-14	Connector Cap	1			G-37	Movable Knife Cover	1	147946-0-01	
G-15	Nylon Connector	1		G-38	Thread Trimming Clutch	1	145589-1-01		
G-16-1	Thread Trimming Solenoid	1		G-39	Washer	3	147697-0-01		
G-16-2	Plunger	1		G-40	Screw	3	014680-6-22		
G-16-3	Terminal Pin	2	143549-0-00	G-16 Thread Trimming Solenoid Assembly	G-41	Cord Holder	2	145595-0-01	
G-17	Screw	2	009680-7-12		G-42	Screw	2	009680-6-12	
G-18	Pin	1	047300-8-42		G-43	Bushing	1	146080-0-00	
G-19	Washer	1	025040-3-35		G-44	Cord Holder	1		
G-20	Spring	1	145621-0-01		G-45	Tube Holder	1		
G-21	Stud	1	145620-0-01		G-46	Tube Holder	2		
G-22	Stop Ring	1	048030-3-42		G-47	Tension Release Solenoid Assembly	1		
					G-48	Thread Trimming Solenoid Assembly	1		
					G-49	Cord Holder	1		
					G-50	Cord Holder	2		

H. Synchronizer (-100, -200, -300, -400, -500, -600)



Ref. No.	Name of Parts	Q'ty	Parts No.	Assembly No.	Ref. No.	Name of Parts	Q'ty	Parts No.	Assembly No.
H-1	Screw	2	009711-4-12	H-2 Synchronizer Assembly	H-2-12	Washer	1	028060-2-34	H-2 Synchronizer Assembly
H-2-1	Magnet Stud	1			H-2-13	Screw	1	216880-0-01	
H-2-2	Screw	1	215083-0-01		H-2-14	Cord Holder	1		
H-2-3	Washer	1	025030-3-35		H-2-15	Washer	2	025040-1-35	
H-2-4	Bearing	1			H-2-16	Screw	2	215080-0-01	
H-2-5	Hole IC Holder	1			H-2-17	Synchronizer Cover	1		
H-2-6	Washer	3	025040-3-35		H-2-18	Level	1		
H-2-7	Screw	3	217093-0-01		H-3	Synchronizer Holder Bar	1	218944-0-01	
H-2-8	Hole IC with Cord	1	218953-0-01		H-4	Holder	1	216332-0-01	
H-2-9	Washer	2	025040-1-35		H-5	Screw	1	009781-4-12	
H-2-10	Screw	2	215080-0-01		H-7	Slip Ring Support	1		
H-2-11	Washer	1	025060-3-35						

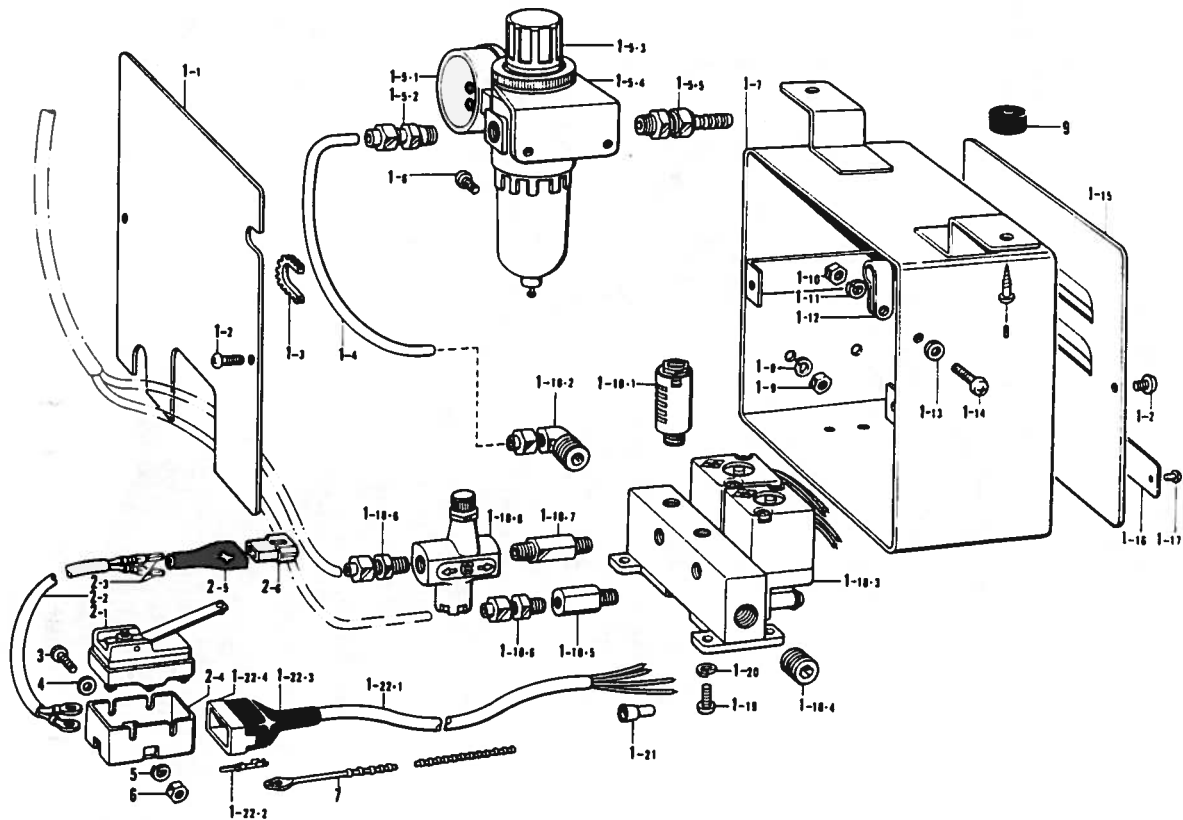
L. Presser Lifter and Treadle (-500, -600)



Ref. No.	Name of Parts	Q'ty	Parts No.	Assembly No.	Ref. No.	Name of Parts	Q'ty	Parts No.	Assembly No.
L- 1	Washer	2	028060-2-40		L-12- 4	Nut	2	021060-2-06	L-12 Treadle Assembly 146175-0-01
L- 2	Screw	2	147141-0-01		L-12- 5	Washer	2	028060-2-40	
L- 3	Presser Foot Cylinder	1	146157-0-01		L-12- 6	Screw	2	001061-6-06	
L- 4	Air Tube	1	149548-0-01		L-12- 7	Washer	2	025060-2-36	
L- 5	Stop Ring	2	048040-3-42		L-12- 8	Treadle Connector	1		
L- 6	Piston Rod Joint	1	140627-0-01		L-12- 9	Treadle	1		
L- 7	Pin	1	146986-0-01		L-12-10	Nut	2	021500-1-04	
L- 8	Piston Drive Link	1	140668-0-01		L-12-11	Washer	1	025050-2-33	
L- 9	Bolt	1	100463-0-01		L-12-12	Spring Hook	1	140953-0-01	
L-10	Bolt	1	017762-0-13		L-12-13	Spring	1	146178-0-01	
L-11	Knee Lifter Joint	1	146039-0-01		L-12-14	Rubber	1	109268-0-01	
L-12- 1	Adjusting Hook	1	140947-0-01	L-12 Treadle Assembly 146175-0-01	L-12-15	Clip	3	146358-0-01	
L-12- 2	Nut	2	212251-0-01						
L-12- 3	Washer	1	028040-2-43						

* Parts L-12 are only installed at the BROTHER -600 type specification.

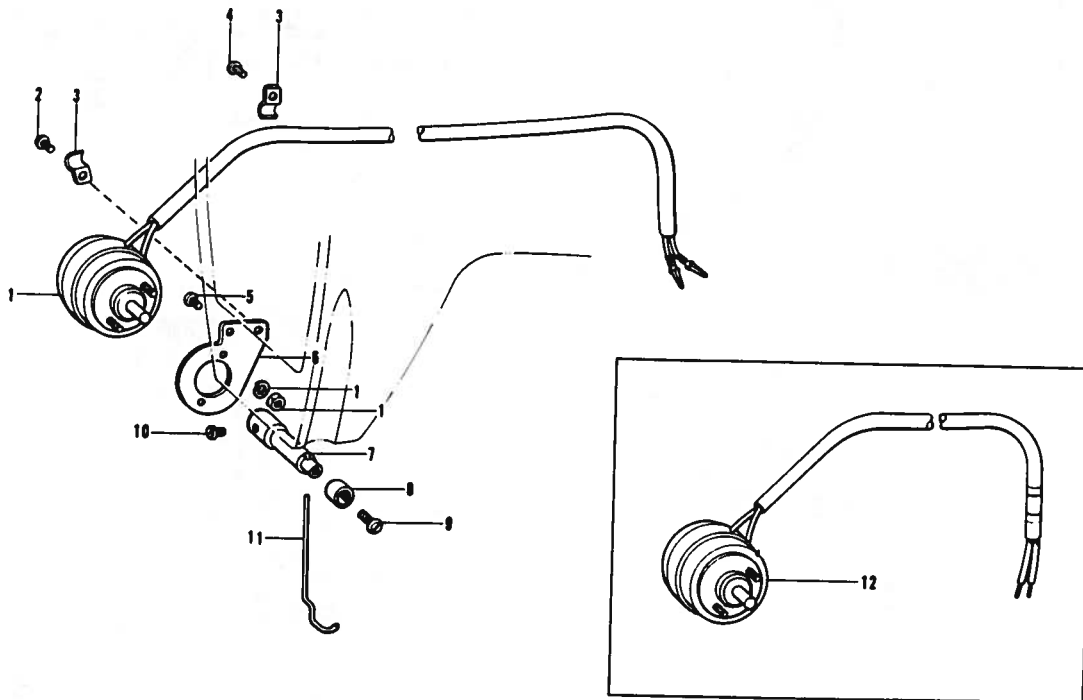
M. Control Box (-500, -600)



Ref. No.	Name of Parts	Q'ty	Parts No.	Assembly No.	Ref. No.	Name of Parts	Q'ty	Parts No.	Assembly No.
M-1-1	Back Cover	1			M-1-18-6	1/8" Connector	2	140543-0-00	M-1-18 Solenoid Valve Assembly
M-1-2	Screw	4	008400-5-64		M-1-18-7	Speed Control Connector	1	142037-0-00	
M-1-3	Nylon Bushing	1	146171-0-00		M-1-18-8	Speed Controller	1	142038-0-01	
M-1-4	Air Tube	1	140540-0-00		M-1-19	Screw	4	002501-0-64	
M-1-5-1	Presser Gauge	1			M-1-20	Washer	4	028050-2-43	
M-1-5-2	1/4" Connector Assembly	1	142349-0-00	M-1-5 Air Unit Assembly	M-1-21	Connector	4	206755-0-00	
M-1-5-3	Valve	1	143960-1-01		M-1-22-1	Valve Cord	1		M-1-22 Valve Cord Assembly
M-1-5-4	Air Unit Holder Plate	1	143962-0-01	143959-1-03	M-1-22-2	Terminal Pin	4	143549-0-00	
M-1-5-5	Air Tube Connector	1	140678-0-00		M-1-22-3	Connector Cap	1	145596-0-01	
M-1-6	Screw	2	002501-0-64		M-1-22-4	Nylon Connector	1	146118-0-00	
M-1-7	Valve Case	1			M-2-1	Micro Switch	1	140948-0-01	
M-1-8	Washer	2	028050-2-43		M-2-2	Presser Foot Lifter Cord	1		M-2 Presser Foot Lifter Cord Assembly
M-1-9	Nut	2	021500-1-63		M-2-3	Terminal Pin	2	143549-0-00	
M-1-10	Nut	1	021300-1-03		M-2-4	Cover	1	140950-0-00	
M-1-11	Washer	1	028030-2-43	M-1 Valve Case Assembly	M-2-5	Connector Cap	1	143489-0-01	
M-1-12	Cord Holder	1	149547-0-00	149539-1-01	M-2-6	Nylon Connector	1	143488-0-01	
M-1-13	Washer	1	025030-1-33		M-3	Screw	2	002303-0-06	
M-1-14	Screw	1	002301-0-03		M-4	Washer	2	025030-2-33	
M-1-15	Rear Cover	1			M-5	Washer	2	028030-2-43	
M-1-16	Name Plate	1			M-6	Nut	2	021300-1-03	
M-1-17	Rivet	2			M-7	Bead Band	1	144189-0-01	
M-1-18-1	Silencer	2	140682-0-01		M-8	Screw	2	100666-0-02	
M-1-18-2	1/4" Elbow	1	140538-0-00	M-1-18 Solenoid Valve Assembly	M-9	Cushion Rubber	2	115018-0-01	
M-1-18-3	Solenoid Valve	2	149544-0-01	149543-0-01					
M-1-18-4	1/4" Cap	1	140542-0-01						
M-1-18-5	Valve Connector	1	140539-0-00						

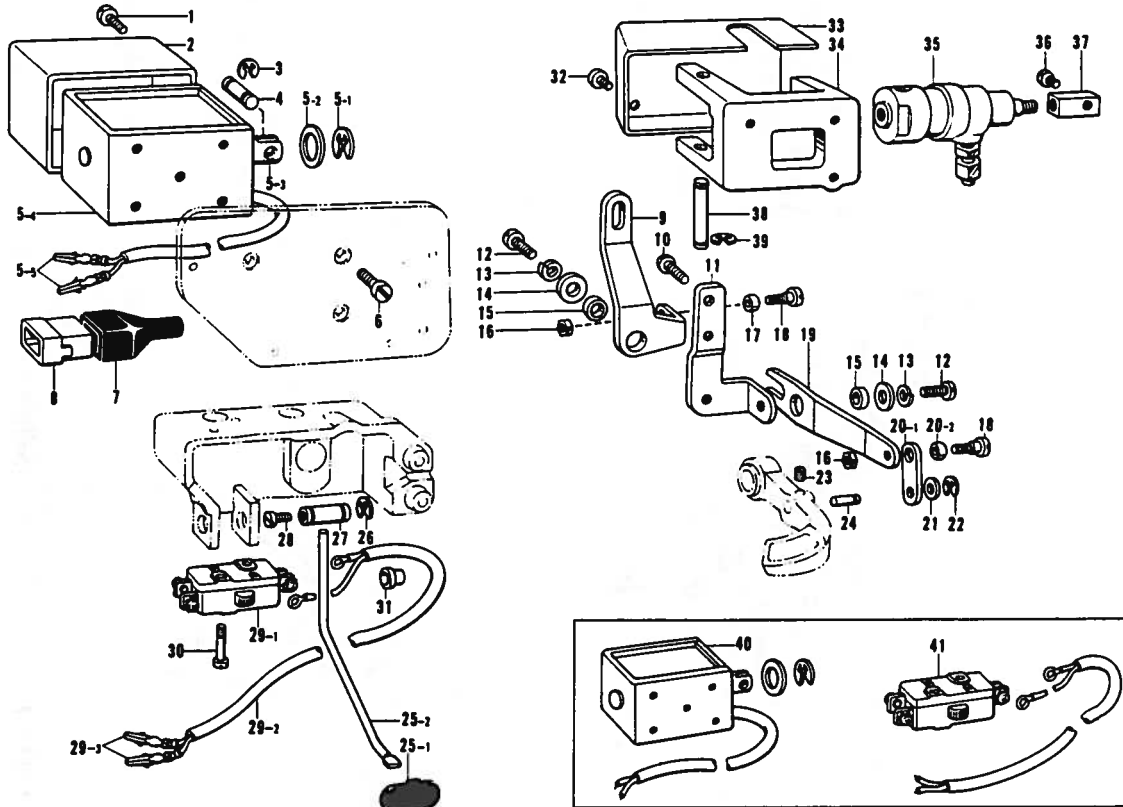
* Parts M-2-M-7 are for -600 type specification.

J. Thread Wiper Mechanism (-200, -400, -500)



Ref. No.	Name of Parts	Q'ty	Parts No.	Assembly No.	Ref. No.	Name of Parts	Q'ty	Parts No.	Assembly No.
J-1	Thread Wiper Solenoid	1			J-7	Thread Wiper Stud	1	150801-1-01	
J-2	Screw	1	009670-8-12		J-8	Thread Wiper Stud Collar	1	146288-0-01	
J-3	Supporter	2	140647-0-01		J-9	Screw	1	001670-5-14	
J-4	Screw	1	009670-6-12		J-10	Screw	1	144458-0-01	
J-5	Screw	1	009670-6-12		J-11	Thread Wiper	1	150832-0-00	
J-6	Solenoid Holder	1	150800-0-01		J-12	Thread Wiper Solenoid	1		

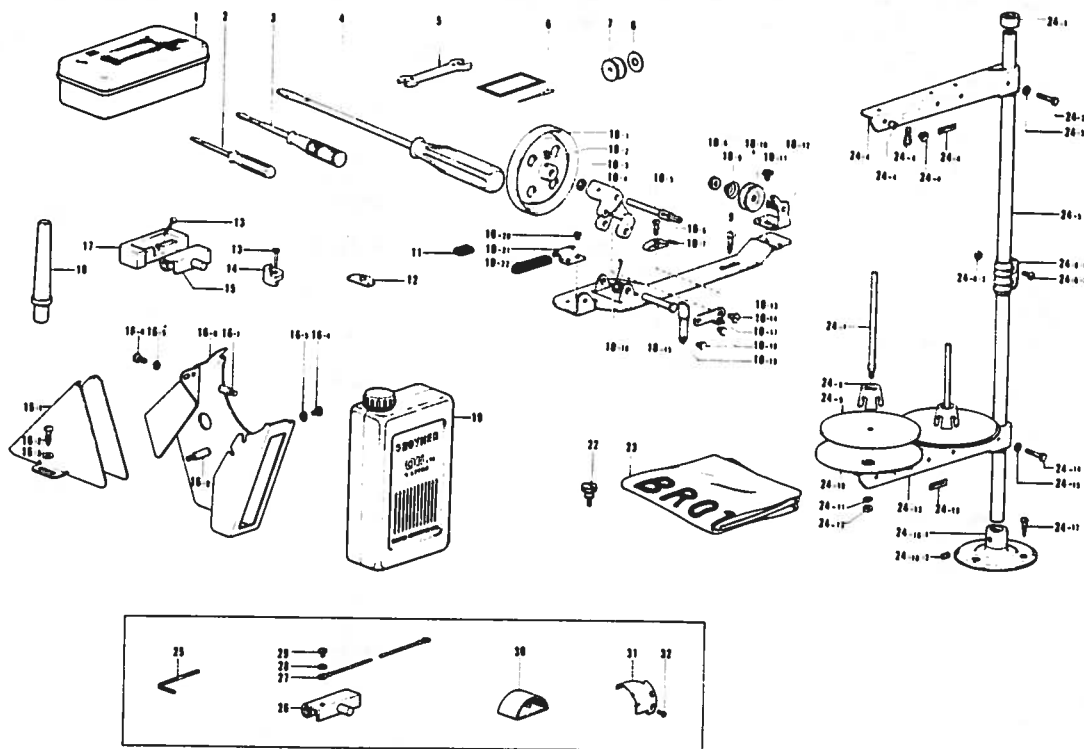
K. Quick Back Mechanism (-300, -400, -500, -600)



Ref. No.	Name of Parts	Q'ty	Parts No.	Assembly No.	Ref. No.	Name of Parts	Q'ty	Parts No.	Assembly No.
K-1	Screw	1	007501-2-02		K-21	Washer	1	146115-0-00	
K-2	Solenoid Cover	1	148465-0-00		K-22	Stop Ring	1	048040-3-42	
K-3	Stop Ring	2	048040-3-42		K-23	Screw	1	013679-4-12	
K-4	Pin	1	147754-0-01		K-24	Pin	1	146114-0-01	
K-5-1	Stop Ring	1	146103-0-01	K-5 Reverse Solenoid Assembly	K-25-1	Actuator	1	148461-0-01	K-25 Actuator Assembly 148460-0-01
K-5-2	Rubber Stopper	1	146104-0-00		K-25-2	Actuator Bar	1	146128-0-00	
K-5-3	Plunger	1			K-26	Stop Ring	2	048080-3-42	
K-5-4	Solenoid	1			K-27	Actuator Pin	1	146125-0-01	
K-5-5	Terminal Pin	2	143549-0-00		K-28	Screw	1	009681-4-14	
K-6	Screw	3	007500-8-12	K-29-1	Micro Switch	1	140643-0-00	K-29 Switch	
K-7	Connector Cap	1		K-29-2	Cord	1	146122-0-00		
K-8	6P Connector	1		K-29-3	Terminal Pin	2	143549-0-00		
K-9	Solenoid Lever Bracket	1	148454-0-01	K-30	Screw	2	146124-0-01		
K-10	Bolt	2	146360-0-02	K-31	Bushing	1	146080-0-00		
K-11	Solenoid Lever	1	148453-0-01	K-32	Screw	2	009670-5-13		
K-12	Screw	2	009761-4-12	K-33	Cover	1	146156-0-01		
K-13	Washer	2	028060-2-42	K-34	Cylinder Holder	1	148853-0-01		
K-14	Washer	2	141343-0-02	K-35	Reverse Cylinder	1	146149-0-01		
K-15	Collar	2	148456-0-01	K-36	Screw	1	141598-0-01		
K-16	Nut	2	021760-3-02	K-37	Piston Rod Connector	1	148854-0-01		
K-17	Bushing	1	141331-0-01	K-38	Reverse Cylinder	1	146148-0-01		
K-18	Screw	2	141494-0-01	K-39	Stop Ring	2	048040-3-42		
K-19	Reverse Link	1	148455-0-01	K-40	Reverse Solenoid Assembly	1			
K-20-1	Connecting Link	1	148457-0-01	K-41	Switch	1			
K-20-2	Bushing	1	141331-0-01						

* Parts K-1 ~ K-4 are for -300, -400 type specifications, and parts K-32 ~ K-39 are for -500, -600 type specifications.

Z. Accessories



Ref. No.	Name of Parts	Q'ty	Parts No.	Assembly No.	Ref. No.	Name of Parts	Q'ty	Parts No.	Assembly No.
Z-1	Accessories Box		110436-0-01		Z-16-5	Washer		028680-2-42	Z-16
Z-2	Screw Driver		142443-0-01		Z-16-6	Belt Cover UA		147849-0-01	Belt Cover
Z-3	Screw Driver		118837-0-01		Z-16-7	Stud		147856-0-01	Assembly
Z-4	Screw Driver		101572-1-01		Z-16-8	Stud		147855-0-01	147895-0-11
Z-5	Spanner 8x9		100887-0-01		Z-17	Rubber Hinge			
Z-6	Needle DB x1				Z-18	Head Rest		100477-0-01	
Z-7	Bobbin		146290-0-01		Z-19	Oil Tank		145277-1-03	
Z-8	Bobbin Case Sheet				Z-22	Screw			
Z-9	Screw		100666-0-02		Z-23	Head Cover			
Z-10-1	Bobbin Winder Wheel Assembly				Z-24-1	Cap			
Z-10-2	Screw		100366-0-02		Z-24-2	Bolt		017502-8-03	
Z-10-3	Washer				Z-24-3	Washer		025050-2-33	
Z-10-4	Bobbin Winder Wheel Shaft Bushing				Z-24-4	Thread Hanger Assembly		150192-0-01	
Z-10-5	Bobbin Winder Shaft		117970-0-01		Z-24-5	Pipe		150172-0-01	
Z-10-6	Screw		100657-0-01		Z-24-6-1	Joint		150173-0-01	Z-24-6
Z-10-7	Bobbin Presser				Z-24-6-2	Screw		150202-0-01	Joint Assembly
Z-10-8	Nut				Z-24-6-3	Nut		021500-1-03	150106-0-01
Z-10-9	Spring		100401-0-01		Z-24-7	Spool Shaft		150179-0-01	
Z-10-10	Tension Disc		145446-0-01		Z-24-8	Spool Cushion		147060-0-01	
Z-10-11	Screw				Z-24-9	Spool Mat		150182-0-00	
Z-10-12	Bobbin Winder Wheel Guide Bracket Assembly			Z-10 Bobbin Winder Assembly 117963-0-01	Z-24-10	Spool Stand Base		150180-0-00	Z-24
Z-10-13	Bobbin Winder Wheel Bracket				Z-24-11	Spring Washer		028050-2-43	Cotton Stand Assembly
Z-10-14	Screw		100659-0-01		Z-24-12	Nut		021500-1-03	
Z-10-15	Pin				Z-24-13	Spool Holder Assembly		150177-0-01	
Z-10-16	Spring		117969-0-01		Z-24-14	Bolt		017502-8-03	
Z-10-17	Bobbin Presser Arm				Z-24-15	Washer		025050-2-33	
Z-10-18	Pin		100661-0-01		Z-24-16-1	Cotton Stand Base		150189-0-01	Z-24-16
Z-10-19	Bobbin Presser Arm Bracket				Z-24-16-2	Screw		150181-0-01	Cotton Stand Base Assembly 150139-0-01
Z-10-20	Screw		009679-3-12		Z-24-17	Screw		031452-2-03	
Z-10-21	Bobbin Winder Wheel Stopper Holder				Z-25	Spanner			
Z-10-22	Bobbin Winder Wheel Stopper		100662-0-01		Z-26	Head Cushion			
Z-11	Magnet		112525-0-00		Z-27	Earth Wire			
Z-12	Oil Pan Cushion				Z-28	Washer			
Z-13	Nail				Z-29	Screw			
Z-14	Head Cushion				Z-30	Movable Knife Case			
Z-15	Hinge				Z-31	Movable Knife			
Z-16-1	Belt Cover D		147854-0-01	Z-16	Z-32	Screw			
Z-16-2	Screw		100666-0-02	Belt Cover Assembly					
Z-16-3	Washer		025750-1-34						
Z-16-4	Screw		009680-8-12	147895-0-11					

- * The details of included accessories are subject to change.
- * Änderungen in der Aufstellung der mitgelieferten Zubehöre sind vorbehalten.
- * Les détails des accessoires inclus sont sujets à des changements.
- * Los detalles de los accesorios incluidos pueden variar.

DIFFERENT PARTS LIST

-3.-5

Ref. No.	Name of Parts	-3					-5					
		Spain					Spain	England, France			Spain	Spain
A-4	Screw											108960-0-02
A-5	Face Plate Thread Guide											111476-0-01
A-14	Pretension Assembly											144502-0-01
A-16	Side Cover											118673-0-01
A-29	Upper Tension Regulator Bracket Assembly											181636-0-01
A-29-4	Thread Take-up Spring											100399-0-01
A-29-8	Tension Spring											104525-0-01
A-31	Tension Release Pin											146065-0-00
A-35	Screw											112751-0-02
A-36	Arm Thread Guide, D											118766-0-01
A-40	Needle Bar Position Pointer											118682-0-01
A-44	Tension Release Crank											118763-0-01
A-45	Spring											118765-0-01
A-46	Screw											118764-0-01
A-47	Thread Guide											
A-48	Nut											
A-49	Pretension Stud											
A-50	Thread Guide Disc											
A-51	Washer											
A-52	Spring											
A-53	Nut											
A-54	Spring											
A-55	Nut											
A-56	Washer											
A-57	Thread Guide Plate											
B-2	Needle Bar Connecting Rod Assembly					118827-0-01						140883-0-01
B-3	Thread Take-up Crank					111465-0-00						109205-0-00
B-14	Pulley											115244-0-01
B-33	Lower Shaft											109160-0-01
B-35	Rotary Hook Assembly					143784-0-01						140882-0-01
B-37	Bobbin Case Sheet											140356-0-01
B-38	Bobbin Case											100369-0-01
B-39	Screw											107407-0-02
B-43	Needle Plate					143855-0-01						140715-0-01
B-44	Needle Plate Washer											
B-45	Bobbin Presser Spring											

From the library of: Diamond Needle Corp

Ref. No.	Name of Parts	Sub Class Motor Spec.			Destination			- 3			- 5		
		Spain			Spain	England, France				Spain	Spain	Spain	
C- 8	Needle Feed Eccentric Wheel	180793-0-01						181226-0-01					
C-12	Spring							118710-0-01					
C-22	Needle	100265-0-34			107415 -0.14	107415 -0.18				100265-0-42			
C-23	Needle Bar Thread Guide							112775-0-01					
C-27	Needle Bar Bracket Assembly	140498-0-01						140428-0-01					
C-27- 3	Needle Bar	118685-0-01						140426-0-01					
D- 1	Presser Foot Assembly	141158-0-01						140717-0-01					
D-31	Knee Lifter Assembly												
D-32	Spring												
E- 1	Eccentric Wheel							180791-0-01					
E- 4	Eccentric Wheel	180792-0-01						145269-0-01					
E- 9	Spring	118753-0-01						145643-0-01					
E-12	Reverse Lever							181678-0-01					
E-12- 3	Reverse Lever							118752-0-01					
E-40	Feed Dog	143854-0-01						140716-0-01					
E-58	Feed Rock Shaft Arm							116768-0-01					
F-24	Oil Rejector							144943-0-01					
F-29	Oil Felt							106436-0-01					
F-69	Oil Pan Assembly							181446-2-01					
F-69- 5	Oil Pan							149582-0-01					
F-69-11	Spring												
F-69-12	Knee Lifter Shaft							146035-0-01					
G- 6	Tension Release Solenoid Assembly												
G- 9	Supporter												
G-13	Screw												
G-14	Connector Cap												
G-15	Nylon Connector												
G-16	Thread Trimming Solenoid Assembly												
G-33	Movable Knife												
G-34	Spacer												
G-35	Lower Thread Hinge												
G-44	Cord Holder												
G-45	Tube Holder												
G-46	Tube Holder												
G-47	Tension Release Solenoid Assembly												
G-48	Thread Trimming Solenoid Assembly												

Ref. No.	Name of Parts	- 3				- 5			
		Sub Class Motor Spec		Destination		Sub Class Motor Spec		Destination	
		Spain		Spain	England. France			Spain	Spain
G-49	Cord Holder								
G-50	Cord Holder								
H-2	Synchronizer Assembly								
H-7	Slip Ring Support								
J-1	Thread-Wiper Solenoid								
J-12	Thread Wiper Solenoid								
K-5	Reverse Solenoid Assembly								
K-7	Connector Cap								
K-8	6P Connector								
K-29	Switch								
K-40	Reverse Solenoid Assembly								
K-41	Switch								
Z-6	Needle		100265-0-34		107415 -0-14	107415 -0-18		100265-0-42	
Z-8	Bobbin Case Sheet					140356-0-01			
Z-12	Oil Pan Cushion								
Z-13	Nail								
Z-14	Head Cushion								
Z-15	Hinge								
Z-17	Rubber Hinge								
Z-22	Thumb Screw					106120-0-01			
Z-23	Head Cover								
Z-24	Spool Stand Assembly	150150-0-01			150150-0-01			150150-0-01	
Z-25	Spanner								
Z-26	Head Cushion								
Z-27	Earth Wire								
Z-28	Washer								
Z-29	Screw								
Z-30	Movable Knife Case								
Z-31	Movable Knife								
Z-32	Screw								

Ref. No.	Name of Parts	- 103		- 105	
		Brother	Efka	Brother	Efka
				W. Germany, France	
A-4	Screw				
A-5	Face Plate Thread Guide				
A-14	Pretension Assembly				
A-16	Side Cover		118673-0-01		
A-29	Upper Tension Regulator Bracket Assembly	181636-0-01			181776-1-01
A-29-4	Thread Take-up Spring	100399-0-01			145519-0-01
A-29-8	Tension Spring	104525-0-01			145153-0-01
A-31	Tension Release Pin		146065-0-00		
A-35	Screw				
A-36	Arm Thread Guide, D		147862-0-01		
A-40	Needle Bar Position Pointer				
A-44	Tension Release Crank		118763-0-01		
A-45	Spring		118765-0-01		
A-46	Screw		118764-0-01		
A-47	Thread Guide		145524-0-01		
A-48	Nut		021660-1-02		
A-49	Pretension Stud		146056-0-01		
A-50	Thread Guide Disc	147705-0-01			144504-0-01
A-51	Washer		146206-0-01		
A-52	Spring		146058-0-01		
A-53	Nut		146059-0-01		
A-54	Spring		146060-0-00		
A-55	Nut		105234-0-01		
A-56	Washer		025680-2-34		
A-57	Thread Guide Plate		146055-0-01		
B-2	Needle Bar Connecting Rod Assembly		147700-0-01		
B-3	Thread Take-up Crank		148965-0-00		
B-14	Pulley		148823-0-01		
B-33	Lower Shaft		145517-0-01		
B-35	Rotary Hook Assembly	147101-0-01			148846-0-01
B-37	Bobbin Case Sheet				
B-38	Bobbin Case		148350-1-01		
B-39	Screw		009681-0-12		
B-43	Needle Plate	143855-0-01			148842-0-01
B-44	Needle Plate Washer				146188-0-01
B-45	Bobbin Presser Spring		148967-1-01		

From the library of: Diamond Needle Corp

Ref. No.	Name of Parts	- 103				- 105			
		Sub Class		Efka		Brother		Efka	
		Motor Spec.	Destination		W. Germany, France				
C- 8	Needle Feed Eccentric Wheel	180793-0-01				181226-0-01			
C-12	Spring	118710-0-01							
C-22	Needle	100265-0-34		107415-0-14		100265-0-42			
C-23	Needle Bar Thread Guide	145944-0-01							
C-27	Needle Bar Bracket Assembly	147702-0-01				148843-0-01			
C-27- 3	Needle Bar	146999-0-01				148844-0-01			
D- 1	Presser Foot Assembly	147703-0-01				140717-0-01			
D-31	Knee Lifter Assembly	181427-0-01							
D-32	Spring								
E- 1	Eccentric Wheel	147860-0-01				180791-0-01			
E- 4	Eccentric Wheel	180792-0-01				145269-0-01			
E- 9	Spring	118753-0-01				145643-0-01			
E-12	Reverse Lever	181678-0-01							
E-12- 3	Reverse Lever	118752-0-01							
E-40	Feed Dog	147100-0-01				148845-0-01			
E-58	Feed Rock Shaft Arm	145508-0-01				116768-0-01			
F-24	Oil Rejector								
F-29	Oil Felt			145751-0-01					
F-69	Oil Pan Assembly			181446-2-01					
F-69- 5	Oil Pan			149582-0-01					
F-69-11	Spring			146038-0-01					
F-69-12	Knee Lifter Shaft			146035-0-01					
G- 6	Tension Release Solenoid Assembly	147107-0-01				147107-0-01			
G- 9	Supporter	140647-0-01							
G-13	Screw	001639-3-12							
G-14	Connector Cap	145596-0-01				145596-0-01			
G-15	Nylon Connector	145681-0-00				145681-0-00			
G-16	Thread Trimming Solenoid Assembly	146014-0-01				146014-0-01			
G-33	Movable Knife	145608-0-01				147981-0-01			
G-34	Spacer	145611-0-00				146187-0-00			
G-35	Lower Thrend Hinge	147102-0-01				145610-1-01			
G-44	Cord Holder								
G-45	Tube Holder								
G-46	Tube Holder								
G-47	Tension Release Solenoid Assembly			148852-0-01				148852-0-01	
G-48	Thread Trimming Solenoid Assembly			146910-0-01				146910-0-01	

From the library of: Diamond Needle Corp

Ref. No.	Name of Parts	- 103				- 105			
		Brother		Efka		Brother		Efka	
		Destination		W. Germany. France		Destination		W. Germany. France	
G-49	Cord Holder								
G-50	Cord Holder								
H-2	Synchronizer Assembly	218931-0-01				218931-0-01			
H-7	Slip Ring Support			148825-0-01				148825-0-01	
J-1	Thread Wiper Solenoid								
J-12	Thread Wiper Solenoid								
K-5	Reverse Solenoid Assembly								
K-7	Connector Cap								
K-8	6P Connector								
K-29	Switch								
K-40	Reverse Solenoid Assembly								
K-41	Switch								
Z-6	Needle		100265-0-34		107415-0-14			100265-0-42	
Z-8	Bobbin Case Sheet								
Z-12	Oil Pan Cushion				146004-0-01				
Z-13	Nail				109714-0-00				
Z-14	Head Cushion				146003-1-01				
Z-15	Hinge				143882-0-01				
Z-17	Rubber Hinge				143910-0-01				
Z-22	Thumb Screw								
Z-23	Head Cover				144222-0-01				
Z-24	Spool Stand Assembly		150150-0-01		150150-0-01		150150-0-01		
Z-25	Spanner				146049-0-01				
Z-26	Head Cushion				145945-0-01				
Z-27	Earth Wire				145946-0-01				
Z-28	Washer				025680-2-34				
Z-29	Screw				009680-6-13				
Z-30	Movable Knife Case				145990-0-01				
Z-31	Movable Knife		145608-0-01				147981-0-01		
Z-32	Screw				141542-0-01				

From the library of: Diamond Needle Corp

-200.-300

Ref. No.	Name of Parts	Sub Class	-203		-205	-303	
		Motor Spec.	Efka	Efka	Brother	Efka	W. Germany France
		Destination	W. Germany France				W. Germany France
A-4	Screw						
A-5	Face Plate Thread Guide						
A-14	Pretension Assembly						
A-16	Side Cover		118673-0-01			148452-0-01	
A-29	Upper Tension Regulator Bracket Assembly		181636-0-01	181776-1-01		181636-0-01	
A-29-4	Thread Take-up Spring		100399-0-01	145519-0-01		100399-0-01	
A-29-8	Tension Spring		104525-0-01	145153-0-01		104525-0-01	
A-31	Tension Release Pin				146065-0-00		
A-35	Screw						
A-36	Arm Thread Guide, D				147862-0-01		
A-40	Needle Bar Position Pointer						
A-44	Tension Release Crank				118763-0-01		
A-45	Spring				118765-0-01		
A-46	Screw				118764-0-01		
A-47	Thread Guide				145524-0-01		
A-48	Nut				021660-1-02		
A-49	Pretension Stud				146056-0-01		
A-50	Thread Guide Disc		147705-0-01	144504-0-01		147705-0-01	
A-51	Washer				146206-0-01		
A-52	Spring				146058-0-01		
A-53	Nut				146059-0-01		
A-54	Spring				146060-0-00		
A-55	Nut				105234-0-01		
A-56	Washer				025680-2-34		
A-57	Thread Guide Plate				146055-0-01		
B-2	Needle Bar Connecting Rod Assembly				147700-0-01		
B-3	Thread Take-up Crank				148965-0-00		
B-14	Pulley				148823-0-01		
B-33	Lower Shaft				145517-0-01		
B-35	Rotary Hook Assembly		147101-0-01	148846-0-01		147101-0-01	
B-37	Bobbin Case Sheet						
B-38	Bobbin Case				148350-1-01		
B-39	Screw				009681-0-12		
B-43	Needle Plate		143855-0-01	148842-0-01		143855-0-01	
B-44	Needle Plate Washer			146188-0-01			
B-45	Bobbin Presser Spring				148967-1-01		

From the library of: Diamond Needle Corp

Ref. No.	Name of Parts	Sub Class		Motor Spec.		Destination	
		-203	-205	-303			
		Efka	Efka	Brother	Efka		W. Germany, France
C-8	Needle Feed Eccentric Wheel	180793-0-01	181226-0-01		180793-0-01		
C-12	Spring	118710-0-01					
C-22	Needle	100265-0-34	107415-0-14	100265-0-42	100265-0-34		107415-0-14
C-23	Needle Bar Thread Guide			145944-0-01			
C-27	Needle Bar Bracket Assembly	147702-0-01	148843-0-01		147702-0-01		148843-0-01
C-27-3	Needle Bar	146999-0-01	148844-0-01		146999-0-01		148844-0-01
D-1	Presser Foot Assembly	147703-0-01	140717-0-01		147703-0-01		
D-31	Knee Lifter Assembly			181427-0-01			
D-32	Spring						
E-1	Eccentric Wheel	147860-0-01	180791-0-01		147860-0-01		
E-4	Eccentric Wheel	180792-0-01	145269-0-01		180792-0-01		
E-9	Spring	118753-0-01	145643-0-01		148459-0-01		
E-12	Reverse Lever	181678-0-01			181714-0-01		
E-12-3	BReverse Lever	118752-0-01			148458-0-01		
E-40	Feed Dog	147100-0-01	148845-0-01		147100-0-01		
E-58	Feed Rock Shaft Arm	145508-0-01	116768-0-01		145508-0-01		
F-24	Oil Rejector						
F-29	Oil Felt			145751-0-01			
F-69	Oil Pan Assembly			181446-2-01			
F-69-5	Oil Pan			149582-0-01			
F-69-11	Spring			146038-0-01			
F-69-12	Knee Lifter Shaft			146035-0-01			
G-6	Tension Release Solenoid Assembly			147107-0-01			
G-9	Supporter						
G-13	Screw	001639-3-12					
G-14	Connector Cap			145596-0-01			
G-15	Nylon Connector			145681-0-00			
G-16	Thread Trimming Solenoid Assembly			146014-0-01			
G-33	Movable Knife	145608-0-01	147981-0-01		145608-0-01		
G-34	Spacer	145611-0-00	146187-0-00		145611-0-00		
G-35	Lower Thread Hinge	147102-0-01	145610-1-01		147102-0-01		
G-44	Cord Holder				148462-0-01		
G-45	Tube Holder				142268-0-01		
G-46	Tube Holder	142268-0-01					
G-47	Tension Release Solenoid Assembly	148852-0-01			148852-0-01		
G-48	Thread Trimming Solenoid Assembly	146910-0-01			146910-0-01		

From the library of: Diamond Needle Corp

Ref. No.	Name of Parts	Sub Class Motor Spec. Destination	- 203		- 205	- 303			
			Efka		Efka	Brother		Efka	
				W. Germany France					W. Germany France
G-49	Cord Holder								
G-50	Cord Holder								
H-2	Synchronizer Assembly					218931-0-01			
H-7	Slip Ring Support		148825-0-01					148825-0-01	
J-1	Thread Wiper Solenoid		150805-0-01						
J-12	Thread Wiper Solenoid								
K-5	Reverse Solenoid Assembly					147756-0-01			
K-7	Connector Cap					145596-0-01			
K-8	6P Connector					146118-0-00			
K-29	Switch					146121-0-00			
K-40	Reverse Solenoid Assembly							147757-0-01	
K-41	Switch							146913-0-00	
Z-6	Needle		100265-0-34	107415-0-14	100265-0-42		100265-0-34	107415-0-14	
Z-8	Bobbin Case Sheet								
Z-12	Oil Pan Cushion					146004-0-01			
Z-13	Nail					109714-0-00			
Z-14	Head Cushion					146003-1-01			
Z-15	Hinge					143882-0-01			
Z-17	Rubber Hinge					143910-0-01			
Z-22	Thumb Screw								
Z-23	Head Cover					144222-0-01			
Z-24	Spool Stand Assembly		150150-0-01				150150-0-01	150150-0-01	
Z-25	Spanner					146049-0-01			
Z-26	Head Cushion					145945-0-01			
Z-27	Earth Wire					145946-0-01			
Z-28	Washer					025680-2-34			
Z-29	Screw					009680-6-13			
Z-30	Movable Knife Case					145990-0-01			
Z-431	Movable Knife		145608-0-01	147981-0-01			145608-0-01		
Z-32	Screw					141542-0-01			

-400.-500

Ref. No.	Name of Parts	Sub Class Motor Spec. Destination	-403			-503			-505
			Efka			Efka		Efka	
			W. Germany, France	U.S.A., Canada		W. Germany, France	U.S.A., Canada		
A-4	Screw								
A-5	Face Plate Thread Guide								
A-14	Pretension Assembly								
A-16	Side Cover				148452-0-01				
A-29	Upper Tension Regulator Bracket Assembly				181636-0-01			181776-1-01	
A-29-4	Thread Take-up Spring				100399-0-01			145519-0-01	
A-29-8	Tension Spring				104525-0-01			145153-0-01	
A-31	Tension Release Pin		146065-0-00						
A-35	Screw								
A-36	Arm Thread Guide, D				147862-0-01				
A-40	Needle Bar Position Pointer								
A-44	Tension Release Crank		118763-0-01						
A-45	Spring		118765-0-01						
A-46	Screw		118764-0-01						
A-47	Thread Guide				145524-0-01				
A-48	Nut				021660-1-02				
A-48	Pretension Stud				146056-0-01				
A-50	Thread Guide Disc				147705-0-01			144504-0-01	
A-51	Washer				146206-0-01				
A-52	Spring				146058-0-01				
A-53	Nut				146059-0-01				
A-54	Spring				146060-0-01				
A-55	Nut				105234-0-01				
A-56	Washer				025680-2-34				
A-57	Thread Guide Plate				146055-0-01				
B-2	Needle Bar Connecting Rod Assembly				147700-0-01				
B-3	Thread Take-up Crank				148965-0-00				
B-14	Pulley				148823-0-01				
B-33	Lower Shaft				145517-0-01				
B-35	Rotary Hook Assembly				147101-0-01			148846-0-01	
B-37	Bobbin Case Sheet								
B-38	Bobbin Case				148350-1-01				
B-39	Screw				009681-0-12				
B-43	Needle Plate				143855-0-01			148842-0-01	
B-44	Needle Plate Washer							146188-0-01	
B-45	Bobbin Presser Spring				148967-1-01				

From the library of: Diamond Needle Corp

Ref. No.	Name of Parts	- 403			- 503			- 505
		Sub Class	Efka		Efka		Efka	
		Motor Spec	W. Germany. France	U.S.A. Canada	W. Germany. France	U.S.A. Canada		
	Destination							
C- 8	Needle Feed Eccentric Wheel			180793-0-01			181226-0-01	
C-12	Spring					118710-0-01		
C-22	Needle	100265-0-34	107415-0-14	100265-0-34	107415-0-14	100265-0-34	100265-0-42	
C-23	Needle Bar Thread Guide			145944-0-01				
C-27	Needle Bar Bracket Assembly	147702-0-01	148843-0-01	147702-0-01	148843-0-01	147702-0-01	148843-0-01	
C-27- 3	Needle Bar	146999-0-01	148844-0-01	146999-0-01	148844-0-01	146999-0-01	148844-0-01	
D- 1	Presser Foot Assembly			147703-0-01			140717-0-01	
D-31	Knee Lifter Assembly		181427-0-01					
D-32	Spring					146985-0-01		
E- 1	Eccentric Wheel			147860-0-01			180791-0-01	
E- 4	Eccentric Wheel			180792-0-01			145269-0-01	
E- 9	Spring		148459-0-01			145643-0-01		
E-12	Reverse Lever			181714-0-01				
E-12- 3	Reverse Lever			148458-0-01				
E-40	Feed Dog			147100-0-01			148845-0-01	
E-58	Feed Rock Shaft Arm			145508-0-01			116768-0-01	
F-24	Oil Rejector							
F-29	Oil Felt			145751-0-01				
F-69	Oil Pan Assembly		181446-2-01			181761-2-01		
F-69- 5	Oil Pan		149582-0-01			149583-0-01		
F-69-11	Spring		146038-0-01					
F-69-12	Knee Lifter Shaft		146035-0-01			149007-0-01		
G- 6	Tension Release Solenoid Assembly							
G- 9	Supporter							
G-12	Screw							
G-14	Connector Cap							
G-15	Nylon Connector							
G-16	Thread Trimming Solenoid Assembly							
G-33	Movable Knife			145608-0-01			147981-0-01	
G-34	Spacer			145611-0-00			146187-0-00	
G-35	Lower Thread Hinge			147102-0-01			145610-1-01	
G-44	Cord Holder		148462-0-01					
G-45	Tube Holder							
G-46	Tube Holder							
G-47	Tension Release Solenoid Assembly	148852-0-01	151247-0-01	148852-0-01	151247-0-01	148852-0-01	148852-0-01	
G-48	Thread Trimming Solenoid Assembly	146910-0-01	151187-0-01	146910-0-01	151187-0-01	146910-0-01	146910-0-01	

Ref. No.	Name of Parts	Sub Class -403			-503			-505
		Motor Spec	Efka	W. Germany, France	U.S.A., Canada	Efka	W. Germany, France	U.S.A., Canada
G-49	Cord Holder		148856-0-01					
G-50	Cord Holder					148462-0-01		
H-2	Synchronizer Assembly							
H-7	Slip Ring Support				148825-0-01			
J-1	Thread Wiper Solenoid		150805-0-01			150805-0-01		150805-0-01
J-12	Thread Wiper Solenoid			151248-0-01			151248-0-01	
K-5	Reverse Solenoid Assembly							
K-7	Connector Cap							
K-8	6P Connector							
K-29	Switch							
K-40	Reverse Solenoid Assembly		147757-0-01		151181-0-01			
K-41	Switch		146913-0-00		151185-0-01	146913-0-00	151185-0-01	146913-0-00
Z-6	Needle	100265-0-34	107415-0-14		100265-0-34	107415-0-14	100265-0-34	100265-0-42
Z-8	Bobbin Case Sheet							
Z-12	Oil Pan Cushion				146004-0-01			
Z-13	Nail				109714-0-00			
Z-14	Head Cushion				146003-1-01			
Z-15	Hinge				143882-0-01			
Z-17	Rubber Hinge				143910-0-01			
Z-22	Thumb Screw							
Z-23	Head Cover				144222-0-01			
Z-24	Spool Stand Assembly				150150-0-01			
Z-25	Spanner				146049-0-01			
Z-26	Head Cushion				145945-0-01			
Z-27	Earth Wire				145946-0-01			
Z-28	Washer				025680-2-34			
Z-29	Screw				009680-6-13			
Z-30	Movable Knife Case				145990-0-01			
Z-31	Movable Knife				145608-0-01			147981-0-01
Z-32	Screw				141542-0-01			

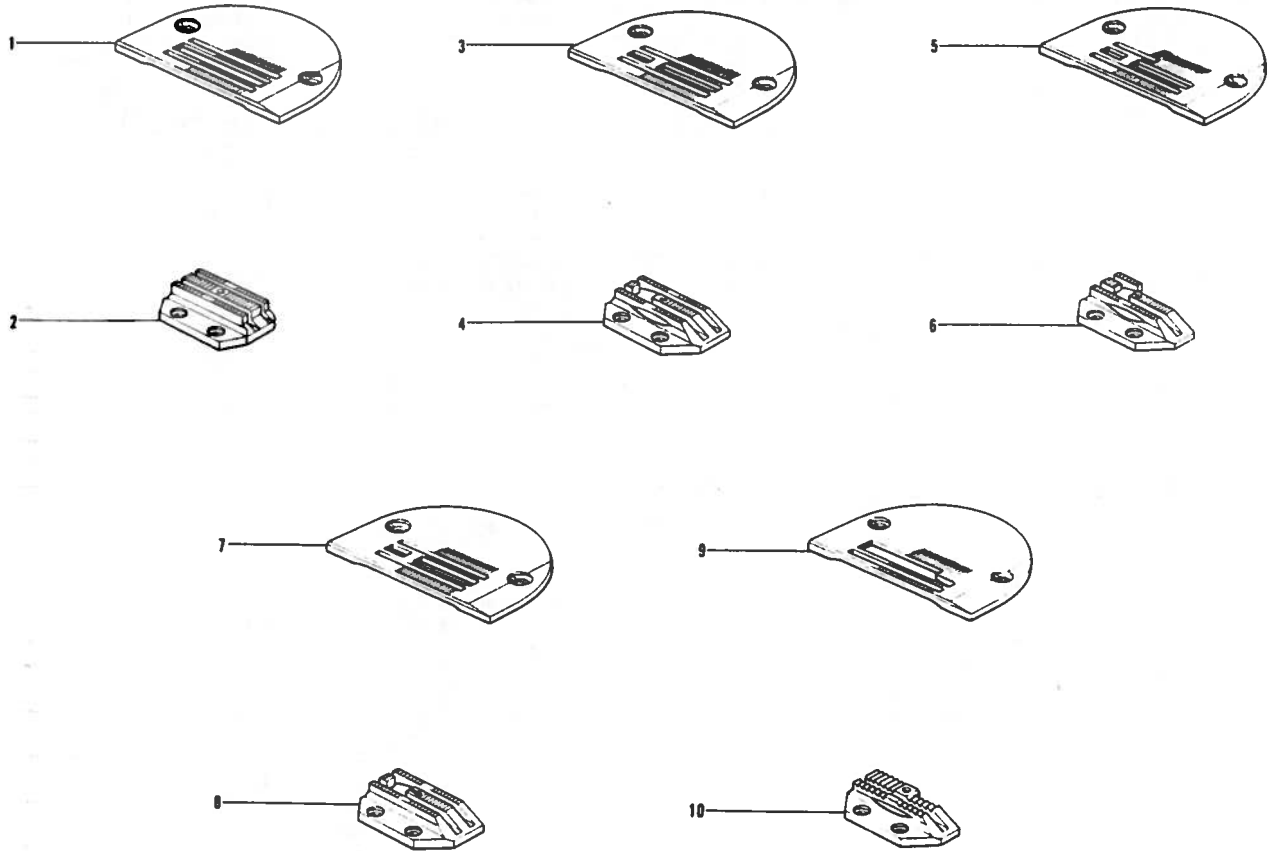
Ref. No.	Name of Parts	- 603		605		
		Brother	Efka	Brother	Efka	
				W German France	U.S.A. Canada	U.S.A. Canada
A-4	Screw					
A-5	Face Plate Thread Guide					
A-14	Pretension Assembly					
A-16	Side Cover			148452-0-01		
A-29	Upper Tension Regulator Bracket Assembly		181636-0-01			181776-1-01
A-29-4	Tread Take-up Spring		100399-0-01			145519-0-01
A-29-8	Tension Spring		104525-0-01			145153-0-01
A-31	Tension Release Pin					
A-35	Screw					
A-36	Arm Thread Guide. D			147862-0-01		
A-40	Needle Bar Position Pointer					
A-44	Tension Release Crank					
A-45	Spring					
A-46	Screw					
A-47	Thread Guide			145524-0-01		
A-48	Nut			021660-1-02		
A-49	Pretension Stud			146056-0-01		
A-50	Thread Guide Disc		147705-0-01			144504-0-01
A-51	Washer			146206-0-01		
A-52	Spring			146058-0-01		
A-53	Nut			146059-0-01		
A-54	Spring			146060-0-00		
A-55	Nut			105234-0-01		
A-56	Washer			025680-2-34		
A-57	Thread Guide Plate			146055-0-01		
B-2	Needle Bar Connecting Rod Assembly			147700-0-01		
B-3	Thread Take up Crank			148965-0-00		
B-14	Pulley			148823-0-01		
B-33	Lower Shaft			145517-0-01		
B-35	Rotary Hook Assembly		147101-0-01			148846-0-01
B-37	Bobbin Case Sheet					
B-38	Bobbin Case			148350-1-01		
B-39	Screw			009681-0-12		
B-43	Needle Plate		143855-0-01			148842-0-01
B-44	Needle Plate Washer					146188-0-01
B-45	Bobbin Presser Spring			148967-1-01		

Ref. No.	Name of Parts	Sub Class		- 603			Destination	
		Motor Spec	Brother	Elka	W. German. France	U.S.A. Canada	Brother	Elka
C-8	Needle Feed Eccentric Wheel			180793-0-01				181226-0-01
C-12	Spring							118710-0-01
C-22	Needle		100265-0-34		107415-0-14	100265-0-34		100265-0-42
C-23	Needle Bar Thread Guide							145944-0-01
C-27	Needle Bar Bracket Assembly		147702-0-01		148843-0-01	147702-0-01		148843-0-01
C-27-3	Needle Bar		146999-0-01		148844-0-01	146999-0-01		148844-0-01
D-1	Presser Foot Assembly			147703-0-01				140717-0-01
D-31	Knee Lifter Assembly							
D-32	Spring							146985-0-01
E-1	Eccentric Wheel			147860-0-01				180791-0-01
E-4	Eccentric Wheel			180792-0-01				145269-0-01
E-9	Spring							145643-0-01
E-12	Reverse Lever							181714-0-01
E-12-3	Reverse Lever							148458-0-01
E-40	Feed Dog			147100-0-01				148845-0-01
E-58	Feed Rock Shaft Arm			145508-0-01				116768-0-01
F-24	Oil Rejector							
F-29	Oil Felt							145751-0-01
F-69	Oil Pan Assembly							181761-2-01
F-69-5	Oil Pan							149583-0-01
F-69-11	Spring							
F-69-12	Knee Lifter Shaft							149007-0-01
G-6	Tension Release Solenoid Assembly	147107-0-01						147107-0-01
G-9	Supporter							
G-13	Screw							
G-14	Connector Cap	145596-0-01						145596-0-01
G-15	Nylon Connector	145681-0-00						145681-0-00
G-16	Thread Trimming Solenoid Assembly	146014-0-01						146014-0-01
G-33	Movable Knife			145608-0-01				147981-0-01
G-34	Spacer			145611-0-00				146187-0-00
G-35	Lower Thread Hinge			147102-0-01				145610-1-01
G-44	Cord Holder							
G-45	Tube Holder							
G-46	Tube Holder							142268-0-01
G-47	Tension Release Solenoid Assembly			148852-0-01	151247-0-01			148852-0-01 151247-0-01
G-48	Thread Trimming Solenoid Assembly			146910-0-01	151187-0-01			146910-0-01 151187-0-01

Ref. No.	Name of Parts	- 603				- 605			
		Brother	Efka		Brother	Efka		U.S.A., Canada	
Sub Class	Motor Spec.			W. Germany	U.S.A.			U.S.A.	
Destination				France	Canada			Canada	
G-49	Cord Holder								
G-50	Cord Holder								
H-2	Synchronizer Assembly	218931-0-01					218931-0-01		
H-7	Slip Ring Support			148825-0-01				148825-0-01	
J-1	Thread Wiper Solenoid								
J-12	Thread Wiper Solenoid								
K-5	Reverse Solenoid Assembly								
K-7	Connector Cap								
K-8	6P Connector								
K-29	Switch	146121-0-00					146121-0-00		
K-40	Reverse Solenoid Assembly								
K-41	Switch			146913-0-00	151185-0-01		146913-0-00	151185-0-01	
Z-6	Needle	100265-0-34		107415-0-14	100265-0-34		100265-0-42		
Z-8	Bobbin Case Sheet								
Z-12	Oil Pan Cushion				146004-0-01				
Z-13	Nail				109714-0-00				
Z-14	Head Cushion				146003-1-01				
Z-15	Hinge				143882-0-01				
Z-17	Rnbbber Hinge				143910-0-01				
Z-22	Thumb Screw								
Z-23	Head Cover				144222-0-01				
Z-24	Spool Stand Assembly	150150-0-01		150150-0-01		150150-0-01		150150-0-01	
Z-25	Spanner				146049-0-01				
Z-26	Head Cushion				145945-0-01				
Z-27	Earth Wire				145946-0-01				
Z-28	Washer				025680-2-34				
Z-29	Screw				009680-6-13				
Z-30	Movable Knife Case				145990-0-01				
Z-31	Movable Knife		145608-0-01				147981-0-01		
Z-32	Screw				141542-0-01				

From the library of: Diamond Needle Corp

a. Exclusive Parts



Ref. No.	Name of Parts	Q'ty	Parts No.	Use	Ref. No.	Name of Parts	Q'ty	Parts No.	Use
a- 1	Needle Plate	1	147954-0-01	Medium Thick	a- 6	Feed Dog	1	148301-0-01	Medium Thick
a- 2	Feed Dog	1	147955-0-01		a- 7	Needle Plate	1	143857-0-01	
a- 3	Needle Plate	1	143857-0-01		a- 8	Feed Dog	1	143856-0-01	
a- 4	Feed Dog	1	147956-0-01		a- 9	Needle Plate	1	148842-0-01	
a- 5	Needle Plate	1	148300-0-01		a-10	Feed Dog	1	151053-0-01	

INDEX

Parts No.	Ref. No.	Remark	Parts No.	Ref. No.	Remark	Parts No.	Ref. No.	Remark	Parts No.	Ref. No.	Remark
001061-6-06	L-12-6		013760-6-10	C-10		047601-8-42	D-28		104564-0-01	E-1-4	
001639-3-12	G-13		013760-8-10	B-11-2		048030-3-42	G-22			F-10	
001670-5-14	J-9			E-1-2		048040-3-42	D-16		104566-0-01	F-27	
001670-8-14	D-2			E-4-2			E-25-8		104619-0-02	D-31-3	
002301-0-03	M-1-14			E-6			K-3		104821-0-01	A-26	
002303-0-06	M-3			E-27			K-22		104829-0-01	A-42	
002501-0-64	M-1-6			E-31-2			K-39		104830-0-01	A-43	
	M-1-19		013760-8-12	D-18			L-5		104832-0-01	A-17	
007500-8-12	K-6		013761-4-10	B-1		048070-3-42	E-7		104885-0-01	E-69-9	
007501-2-02	K-1			B-7		048080-3-42	K-26		104908-0-01	E-45	
008400-5-64	M-1-2			B-9		081002-6-70	F-13		105234-0-01	A-55	
009660-3-02	F-7			B-15		081007-0-70	F-69-3			E-8-2	
009660-7-12	G-26			B-24		081014-6-70	F-16		106120-0-01	Z-22	
009670-4-12	F-3			C-18		100022-0-04	F-69-8		106436-0-01	F-29	
009670-5-12	F-8			C-27-10		100032-0-03	B-42		107155-0-01	F-21	
	F-50		013770-7-10	B-5		100058-0-03	C-2		107407-0-02	B-39	
	F-54			B-18-2		100080-0-03	E-39		107415-0-14	C-22	
009670-5-13	K-32			B-18-4		100134-0-01	A-29-7			Z-6	
009670-6-12	G-8			B-25-2		100136-0-01	A-29-9		108520-0-01	A-19	
	J-4			B-25-4		100260-0-01	C-5		108549-0-01	E-17-2	
	J-5			E-59			C-20		108749-0-01	E-32	
009670-6-14	A-28		014680-6-22	G-40		100265-0-34	C-22		108801-0-01	F-25	
009670-8-12	A-15		014770-6-22	C-26-2			Z-6		108802-0-01	F-30	
	F-65-9		015771-0-12	E-13		100265-0-42	C-22			F-56	
	J-2		017502-8-03	Z-24-2			Z-6		108960-0-02	A-4	
009671-0-12	D-6-2			Z-24-14		100327-0-01	E-16		109151-0-01	E-17-1	
009671-4-13	A-1		017671-8-12	C-27-8		100328-0-01	E-15		109153-0-01	E-35	
009671-4-14	F-42		017762-0-13	D-31-1			F-61		109160-0-01	B-33	
009671-8-13	A-2			L-10		100366-0-02	Z-10-2		109171-0-01	F-26	
009679-3-12	F-28		021060-2-06	L-12-4		100369-0-01	B-38		109173-0-01	B-34	
	G-27		021300-1-03	M-1-10		100399-0-01	A-29-4		109205-0-00	B-3	
	Z-10-20			M-6		100401-0-01	Z-10-9		109268-0-01	L-12-14	
009680-6-12	G-30		021500-1-03	Z-24-6-3		100402-0-04	A-29-1		109405-0-01	F-41	
	G-42			Z-24-12		100463-0-01	D-31-4		109714-0-00	Z-13	
009680-6-13	Z-29		021500-1-04	L-12-10			L-9		110087-0-01	D-31-5	
009680-7-12	D-27		021500-1-63	M-1-9		100477-0-01	Z-18		110161-0-02	D-22	
	G-17		021660-1-02	A-48		100657-0-01	Z-10-6		110367-0-01	B-6	
009680-7-13	A-9		021670-2-03	C-27-7		100659-0-01	Z-10-14		110436-0-01	Z-1	
	F-68			F-45		100661-0-01	Z-10-18		110488-0-01	C-11-4	
009680-7-14	E-18		021760-3-02	K-16		100662-0-01	Z-10-22		110562-0-01	C-7-2	
009680-8-12	Z-16-4		025030-1-33	M-1-13		100666-0-02	M-8			C-11-5	
009681-0-12	B-39		025030-2-33	M-4			Z-9		110563-0-01	C-7-3	
	C-11-1		025030-3-35	H-2-3			Z-16-2		110711-0-01	C-29	
009681-0-13	G-11		025040-1-35	H-2-9		100887-0-01	Z-5		111194-0-01	F-39	
009681-0-14	A-13			H-2-15		101482-0-01	E-3		111465-0-00	B-3	
009681-2-12	E-46		025040-3-35	G-19		101487-0-00	F-12		111466-0-01	D-3	
	E-57			H-2-6		101572-1-01	Z-4		111467-0-01	D-4	
009681-4-14	K-28		025050-2-33	L-12-11		101706-0-01	C-8-2		111468-0-01	B-2-1	
009681-6-12	E-55-2			Z-24-3			C-11-6		111476-0-01	A-5	
009711-2-12	C-6			Z-24-15			E-42		111863-0-01	F-38	
	C-14		025060-2-36	L-12-7			E-51		111865-0-01	F-31	
	E-49		025060-3-35	H-2-11			E-53		112072-0-01	E-11	
009711-4-12	H-1		025100-1-30	E-29			E-54-2		112467-0-02	F-65-1	
009761-4-12	K-12		025680-1-33	G-36		101706-0-03	B-22-2		112525-0-00	Z-11	
009781-4-12	H-5		025680-2-34	A-56			B-28-2		112744-0-01	F-51	
011681-2-12	B-30			Z-28		102538-0-02	F-19		112751-0-02	A-35	
	E-8-3		025750-1-34	Z-16-3		102716-0-03	A-14-5		112775-0-01	C-23	
011711-4-12	A-34		028030-2-43	M-1-11			G-2		112782-0-01	F-1	
013679-4-12	C-17			M-5		102921-0-02	D-19		113316-0-01	A-27	
	K-23		028040-2-43	L-12-3		103950-0-02	A-30		114294-0-01	A-29-3	
013680-6-12	A-10		028050-2-43	M-1-8		104449-0-01	A-6		114561-0-01	B-41-2	
013680-8-12	B-32			M-1-20		104450-0-01	A-7		114931-0-01	A-11	
	F-57			Z-24-11		104464-0-01	B-4		114966-0-01	D-31-7	
013689-4-12	E-21		028060-2-34	H-2-12		104478-0-01	B-13		114967-0-01	D-31-6	
	E-23		028060-2-40	L-1		104520-1-00	B-26		115018-0-01	M-9	
	E-25-4			L-12-5		104521-0-02	C-26-1		115244-0-01	B-14	
	E-34		028060-2-42	K-13		104525-0-01	A-29-8		115663-0-01	E-38	
	F-24-2		028680-2-42	Z-16-5		104546-0-01	F-18		116112-0-01	A-33	
013760-6-10	B-17		031452-2-03	Z-24-17		104547-0-01	F-17		116735-0-00	B-2-3	
	B-20		047300-8-42	G-18		104555-0-01	F-14		116743-0-01	D-9	

Parts No.	Ref. No.	Remark	Parts No.	Ref. No.	Remark	Parts No.	Ref. No.	Remark	Parts No.	Ref. No.	Remark
116744-0-01	D-10		118747-0-01	E-33		140757-0-01	B-40		145153-0-01	A-29-8	
116746-0-01	D-15		118748-0-01	E-30		140882-0-01	B-35		145269-0-01	E-4	
116748-0-01	D-23		118751-0-01	E-12-1		140883-0-01	B-2		145277-1-03	Z-19	
116751-0-01	D-26		118752-0-01	E-12-3		140885-0-01	A-8		145446-0-01	A-29-6	
116752-0-01	D-20		118753-0-01	E-9		140947-0-01	L-12-1			Z-10-10	
116766-0-01	E-41		118758-0-01	E-2		140948-0-01	M-2-1		145465-0-01	B-2-5	
	E-52		118759-0-01	B-22		140950-0-00	M-2-4		145508-0-01	E-58	
116768-0-01	E-58		118761-1-00	B-31		140953-0-01	L-12-12		145510-0-00	E-44	
116794-0-01	F-23		118762-0-00	B-29		141158-0-01	D-1		145517-0-01	B-33	
116798-0-01	D-30		118763-0-01	A-44		141207-0-01	D-13		145524-0-01	A-47	
116799-0-01	F-35		118764-0-01	A-46		141208-0-01	D-11		145534-0-01	F-22	
116917-0-01	E-36		118765-0-01	A-45		141331-0-01	K-17		145589-1-01	G-38	
116919-0-01	E-50		118766-0-01	A-36			K-20-2		145591-0-01	A-29-4	
116920-0-01	E-43		118767-0-01	A-3		141343-0-02	K-14		145595-0-01	G-41	
116922-0-01	A-29-5		118768-0-01	F-46		141494-0-01	K-18		145596-0-01	G-14	
117211-0-01	D-25			F-48		141542-0-01	Z-32			K-7	
117666-0-01	A-39			F-53		141598-0-01	K-36			M-1-22-3	
117963-0-01	Z-10		118770-0-01	F-33		141728-0-01	D-8		145601-0-01	G-31	
117969-0-01	Z-10-16		118777-0-01	F-2		142037-0-00	M-1-18-7		145608-0-01	G-33	
117970-0-01	Z-10-5		118778-0-01	F-11		142038-0-01	M-1-18-8			Z-31	
118672-0-01	A-22		118779-0-01	F-10		142268-0-01	G-45		145610-1-01	G-35	
118673-0-01	A-16		118781-0-01	F-4			G-46		145611-0-00	G-34	
118674-0-01	A-12		118782-0-01	F-5		142274-0-01	A-41		145617-0-01	G-25	
118675-0-01	A-18		118783-0-01	F-44		142349-0-00	M-1-5-2		145618-0-01	G-23	
118677-0-01	B-12		118784-0-01	F-43		142425-0-01	C-27-6		145619-0-01	G-24	
118678-0-01	B-8		118785-0-00	A-37		142443-0-01	Z-2		145620-0-01	G-21	
118682-0-01	A-40		118786-0-01	F-6		142482-0-01	E-17-3		145621-0-01	G-20	
118685-0-01	C-27-3		118788-0-01	F-55		142572-0-01	E-56		145623-0-01	G-28	
118686-0-01	C-27-2		118824-0-01	E-31		142573-0-01	E-47		145643-0-01	E-9	
118687-0-01	C-27-1		118827-0-01	B-2		142708-0-00	B-19		145681-0-00	G-15	
118688-0-01	C-27-5		118829-0-01	B-2-4		142709-0-00	B-23		145751-0-01	F-29	
118689-0-01	C-27-4		118837-0-01	Z-3		142746-0-02	E-17-4		145933-0-01	G-29	
118690-0-01	C-27-11		118865-0-01	E-19		142747-0-02	E-17-5		145944-0-01	C-23	
118691-0-01	C-25		118996-0-00	F-60		143196-0-01	F-15		145945-0-01	Z-26	
118692-0-01	C-28		120263-0-01	G-4		143488-0-01	M-2-6		145946-0-01	Z-27	
118693-0-01	C-1		121007-0-01	B-27		143489-0-01	M-2-5		145951-0-01	C-26	
118696-0-00	C-3		121823-0-01	G-7		143549-0-00	G-6-2		145990-0-01	Z-30	
118698-0-01	C-27-4		122771-0-01	B-41-1			G-16-3		146003-1-01	Z-14	
118698-1-01	C-7		140320-0-00	F-52			K-5-5		146004-0-01	Z-12	
118699-0-01	C-7-5		140356-0-01	B-37			K-29-3		146014-0-01	G-16	
118700-0-01	C-7-4			Z-8			M-1-22-2		146035-0-01	F-69-12	
118703-0-01	C-11		140357-0-01	F-36			M-2-3		146037-0-01	F-69-7	
118705-0-01	C-11-2		140361-0-01	F-47		143784-0-01	B-35		146038-0-01	F-69-11	
118706-0-01	C-11-8		140407-0-01	D-7		143854-0-01	E-40		146039-0-01	D-31-2	
118707-0-01	C-9		140412-0-01	F-34		143855-0-01	B-43			L-11	
118708-0-01	C-19		140426-0-01	C-27-3		143856-0-01	a-8		146040-0-01	F-69-1	
118709-0-01	C-11-7		140428-0-01	C-27		143857-0-01	a-3		146049-0-01	Z-25	
118710-0-01	C-12		140438-0-01	F-37			a-7		146055-0-01	A-57	
118712-0-01	C-15		140480-0-01	F-69-4		143882-0-01	Z-15		146056-0-01	A-49	
118713-0-01	C-16		140498-0-01	C-27		143910-0-01	Z-17		146058-0-01	A-52	
	E-20		140503-0-01	D-31-8		143959-1-03	M-1-5		146059-0-01	A-53	
118718-0-01	D-5		140518-0-01	F-69-2		143960-1-01	M-1-5-3		146060-0-00	A-54	
118719-0-01	D-17		140538-0-00	M-1-18-2		143962-0-01	M-1-5-4		146065-0-00	A-31	
118720-0-01	D-14		140539-0-00	M-1-18-5		144189-0-01	M-7		146080-0-00	G-43	
118723-0-01	D-29		140540-0-00	M-1-4		144222-0-01	Z-23			K-31	
118725-0-01	E-5		140542-0-01	M-1-18-4		144458-0-01	J-10		146103-0-01	K-5-1	
118727-0-01	E-25		140543-0-00	M-1-18-6		144502-0-01	A-14		146104-0-00	K-5-2	
118729-0-01	E-25-3		140553-0-01	C-24		144504-0-01	A-14-3		146114-0-01	K-24	
118730-0-01	E-25-1		140627-0-01	L-6			A-50		146115-0-00	K-21	
118731-0-01	E-25-9		140643-0-00	K-29-1		144505-0-00	A-14-4		146118-0-00	K-8	
118732-0-01	E-25-6		140647-0-01	G-9		144712-0-01	E-5-2			M-1-22-4	
118733-0-01	E-25-7			J-3		144741-0-01	A-29-2		146121-0-00	K-29	
118734-0-01	E-26		140668-0-01	L-8		144868-0-01	B-21		146122-0-00	K-29-2	
118735-0-01	E-28		140678-0-00	M-1-5-5		144869-0-01	F-65-7		146124-0-01	K-30	
118736-0-01	E-24		140682-0-01	M-1-18-1		144872-0-01	F-67		146125-0-01	K-27	
118737-0-01	E-25-2		140704-0-01	A-23		144874-0-01	F-65-8		146128-0-00	K-25-2	
118740-0-01	E-22		140715-0-01	B-43		144875-0-01	F-65-3		146148-0-01	K-38	
118741-0-01	E-8		140716-0-01	E-40		144876-0-01	F-65-2		146149-0-01	K-35	
118744-0-01	E-8-1		140717-0-01	D-1		144878-0-01	F-65-4		146156-0-01	K-33	
118746-0-01	E-10		140726-0-00	B-10		144943-0-01	F-24		146157-0-01	L-3	

Parts No.	Ref. No.	Remark	Parts No.	Ref. No.	Remark	Parts No.	Ref. No.	Remark	Parts No.	Ref. No.	Remark
146160-0-01	M-2		148452-0-01	A-16		180791-0-01	E-1				
146171-0-00	M-1-3		148453-0-01	K-11		180792-0-01	E-4				
146175-0-01	L-12		148454-0-01	K-9		180793-0-01	C-8				
146178-0-01	L-12-13		148455-0-01	K-19		180952-0-01	D-6				
146187-0-00	G-34		148456-0-01	K-15		181226-0-01	C-8				
146188-0-01	B-44		148457-0-01	K-20-1		181427-0-01	D-31				
146196-0-01	F-66		148458-0-01	E-12-3		181446-2-01	F-69				
146206-0-01	A-51		148459-0-01	E-9		181476-1-01	E-65				
146288-0-01	J-8		148460-0-01	K-25		181482-0-01	E-17				
146290-0-01	B-36		148461-0-01	K-25-1		181523-0-01	E-37				
	Z-7		148462-0-01	G-44		181636-0-01	A-29				
146293-0-01	F-69-6			G-50		181640-0-01	F-9				
146319-0-01	F-64		148465-0-00	K-2		181678-0-01	E-12				
146323-0-00	F-62		148467-0-01	K-20		181714-0-01	E-12				
146324-0-01	F-63		148823-0-01	B-14		181761-2-01	F-69				
146326-0-01	F-59		148825-0-01	H-7		181776-0-01	A-29				
146329-0-00	F-58		148842-0-01	B-43		181994-0-01	B-11				
146331-0-01	B-16			a-9		181995-0-01	B-28				
146358-0-01	L-12-15		148843-0-01	C-27		206755-0-00	M-1-21				
146360-0-02	K-10		148844-0-01	C-27-3		212251-0-01	L-12-2				
146367-0-01	F-69-10		148845-0-01	E-40		215080-0-01	H-2-10				
146398-0-01	F-49		148846-0-01	B-35			H-2-16				
146581-0-01	C-4		148848-0-01	F-65-5		215083-0-01	H-2-2				
	C-21		148849-0-01	F-65-6		216332-0-01	H-4				
146910-0-01	G-48		148852-0-01	G-47		216880-0-01	H-2-13				
146913-0-00	K-41		148853-0-01	K-34		217093-0-01	H-2-7				
146985-0-01	D-32		148854-0-01	K-37		218931-0-01	H-2				
146986-0-01	L-7		148856-0-01	G-49		218944-0-01	H-3				
146999-0-01	C-27-3		148965-0-00	B-3		218953-0-01	H-2-8				
147060-0-01	Z-24-8		148967-1-01	B-45							
147100-0-01	E-40		149007-0-01	F-69-12							
147101-0-01	B-35		149539-1-01	M-1							
147102-0-01	G-35		149543-0-01	M-1-18							
147103-0-01	G-1		149544-0-01	M-1-18-3							
147104-0-01	G-3		149545-0-01	M-1-22							
147106-0-01	G-5		149547-0-00	M-1-12							
147107-0-01	G-6		149548-0-01	L-4							
147110-1-01	G-10		149578-0-00	F-69-13							
147141-0-01	L-2		149582-0-01	F-69-5							
147697-0-01	G-39		149583-0-01	F-69-5							
147700-0-01	B-2		150106-0-01	Z-24-6							
147702-0-01	C-27		150139-0-01	Z-24-16							
147703-0-01	D-1		150150-0-01	Z-24							
147705-0-01	A-50		150172-0-01	Z-24-5							
147754-0-01	K-4		150173-0-01	Z-24-6-1							
147756-0-01	K-5		150177-0-01	Z-24-13							
147757-0-01	K-40		150179-0-01	Z-24-7							
147846-0-01	D-12		150180-0-00	Z-24-10							
147849-0-01	Z-16-6		150181-0-01	Z-24-16-2							
147854-0-01	Z-16-1		150182-0-00	Z-24-9							
147855-0-01	Z-16-8		150189-0-01	Z-24-16-1							
147856-0-01	Z-16-7		150192-0-01	Z-24-4							
147860-0-01	E-1		150202-0-01	Z-24-6-2							
147862-0-01	A-36		150305-0-01	F-40							
147891-0-00	A-38		150306-0-01	F-32							
147895-0-11	Z-16		150800-0-01	J-6							
147946-0-01	G-37		150801-1-01	J-7							
147954-0-01	a-1		150805-0-01	J-12							
147955-0-01	a-2		150832-0-00	J-11							
147956-0-01	a-4		151053-0-01	a-10							
147981-0-01	G-33		151181-0-01	K-40							
	Z-31		151185-0-01	K-41							
148285-0-01	C-13		151187-0-01	G-48							
148286-0-01	E-48		151247-0-01	G-47							
148300-0-01	a-5		151248-0-01	J-12							
148301-0-01	a-6		180018-0-01	B-41							
148350-0-01	B-38		180022-0-01	B-18							
148449-0-01	D-21		180023-0-01	B-25							
148450-0-01	D-24		180321-0-01	E-54							
148451-0-01	G-12		180322-0-01	E-55							